

# Cylinders

## Block Cylinder Specifications

### Single and Double Acting

- No special mounting hardware is required, just bolt down these easy to use devices.
- Dual position mounting, either parallel or perpendicular to piston travel, on every model.
- A force ranging from "minimal" to maximum cylinder capacity is adjusted by tuning the input pressure.
- Advance porting, for easy plumbing, is provided on both bottom and side of most models.

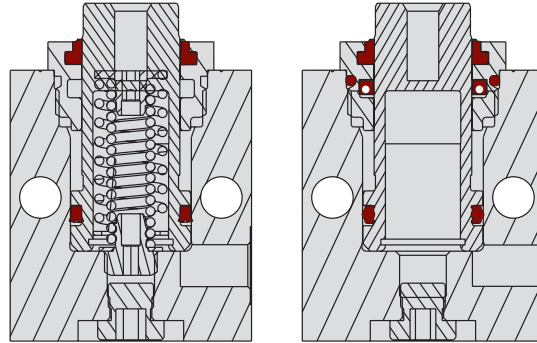


Threaded piston ends allow the use of custom end attachments (Double Acting recommended for attachments or mechanisms).

**F-6**

Vent port with bronze filter (Single Acting) gives the cylinder a place to "breathe" and helps keep chips and other contaminants from being drawn past wipers.

Springs are designed to return the cylinder and contact points, not intended to pull mechanisms.



ILMV201100 REV E

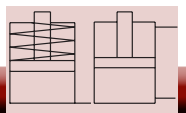
### Specifications

Model No.	Cylinder Capacity (kN)**		Stroke (mm)	Body Size (mm)	Minimum Length (mm)	Piston Area (cm <sup>2</sup> )		Oil Capacity (cm <sup>3</sup> )	
	Extend	Retract				Extend	Retract	Extend	Retract
<b>Single Acting (S/A) Cylinders, actuated hydraulically 1 direction, spring returned.</b>									
42-0110-00	10.1	N/A	6.5	28.5 x 51	60	2.9	N/A	1.9	N/A
42-0110-01			19		79			5.7	
42-0110-02			12.5		71			6.5	
42-0110-03	17.8	N/A	25.5	44.5 x 51	84	5.1	N/A	13	N/A
42-0110-12			38.1		100			19.3	
42-0110-04			51		112.5			26	
42-0110-05	39.9	N/A	12.5	51 x 63.5	73	11.4	N/A	14.5	N/A
42-0110-06			25.5		86			29	
42-0110-13			38.1		98.5			43.4	
42-0110-14			51		114.5			58	
<b>Double Acting (D/A) Cylinders, actuated hydraulically both directions.</b>									
42-0120-00	10.1	5.6	6.5	28.5 x 51	60	2.9	1.6	1.9	1
42-0120-01			19		79			5.7	3
42-0120-02			12.5		71			6.5	2.2
42-0120-03	17.8	5.9	25.5	44.5 x 51	84	5.1	1.7	13	4.4
42-0120-08			38.1		100			19.3	6.6
42-0120-04			51		112.5			26	8.8
42-0120-05	39.9	17.5	12.5	51 x 63.5	73	11.4	5.0	14.5	6.3
42-0120-06			25.5		86			29	12.7
42-0120-09			38.1		98.5			43.4	19
42-0120-07			51		114.5			58	25.4

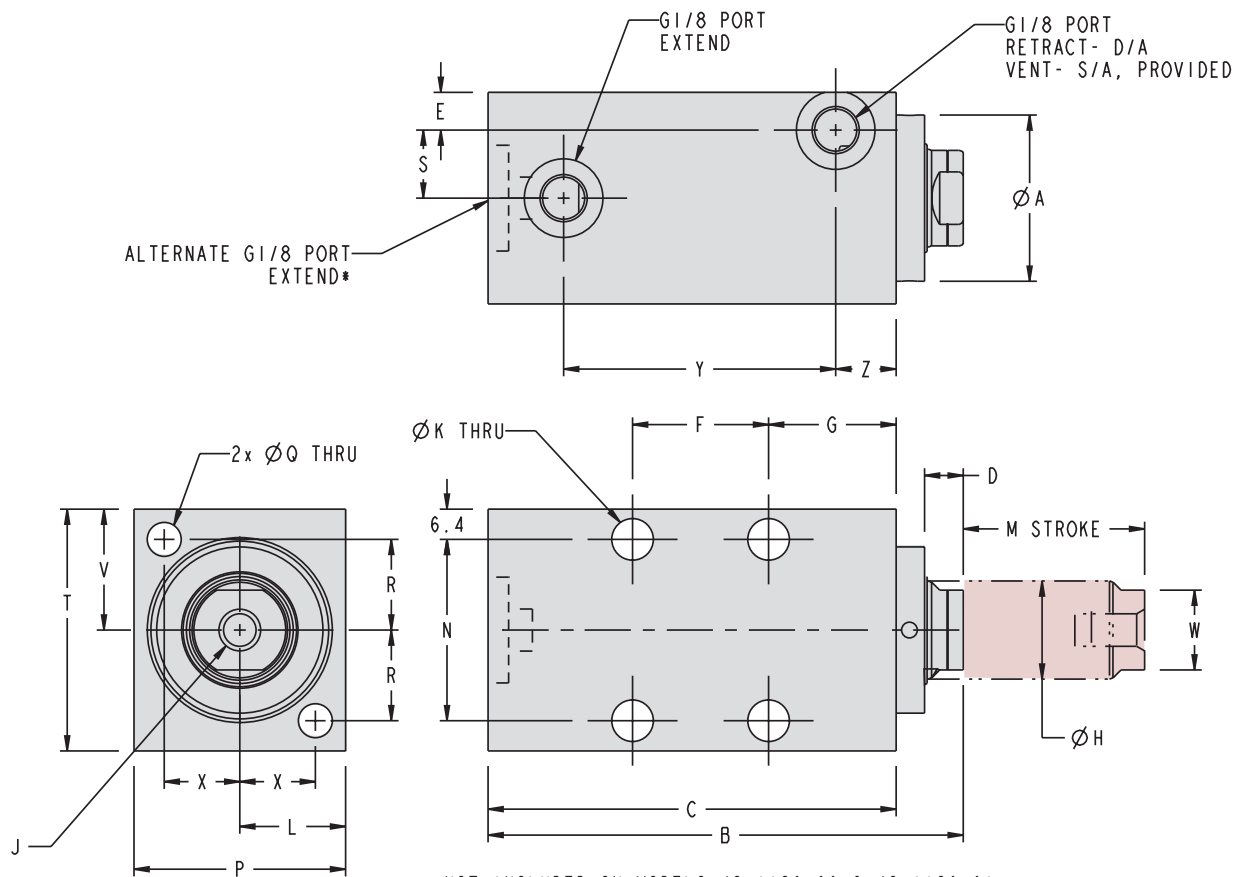
\*\* Cylinder capacities are listed at 350 bar (35 MPa) maximum operating pressure. The output force is adjustable by varying the hydraulic system pressure. To determine approximate output force for your application, multiply the Piston Area times Your System Operating Pressure. Actual force may vary slightly due to friction loss, seal and wiper drag and/or return spring forces.

All dimensions are in mm.





## Block Cylinder Dimensions



**F-7**

\* NOT INCLUDED ON MODELS 42-1120-00 & 42-1120-01

ILMV201101 REV G

### Dimensions

Model No.	A	B	C	D	E	F	G	H	J	K	L	M	N	P	Q	R	S	T	V	W	X	Y	Z	
<b>Single Acting (S/A) Cylinders, actuated hydraulically 1 direction, spring returned.</b>																								
42-0110-00	27	60	47	7.5	9.5	N/A	23.5	12.7	M6 x 1.0 x 11	7.1	14.3	6.5	33.4	28.5	7.1	16.5	0	51	23	11	8	28	47	9.5
42-0110-01		79	66									19												
42-0110-02		71	57			N/A			M8 x 1.25 x 11			12.5												28.5
42-0110-03	35	84	69.5	8	8		27	20.64		8.7	22	25.5	38.1	44.5	7.1	19	14.5	51	25.5	17	16			41
42-0110-12		100	85.5			28.6						38												57
42-0110-04		112.5	98.5			41.3						51												70
42-0110-05		73	57			N/A			M12 x 1.75 x 13			12.5												28.5
42-0110-06	44.5	86	69.5	10	8		27	28.58		8.7	25.5	25.5	50.8	51	8.7	24	17.5	63.5	32	25	18			41
42-0110-13		98.5	82.5			25.4						38												54
42-0110-14		114.5	98.5			41.3						51												70
<b>Double Acting (D/A) Cylinders, actuated hydraulically both directions.</b>																								
42-0120-00	27	60	47	7.5	9.5	N/A	23.5	12.7	M6 x 1.0 x 11	7.1	14.3	6.5	33.4	28.5	7.1	16.5	0	51	23	11	8	28	47	9.5
42-0120-01		79	66									19												
42-0120-02		71	57			N/A			M8 x 1.25 x 11			12.5												28.5
42-0120-03	35	84	69.5	8	8		27	20.64		8.7	22	25.5	38.1	44.5	7.1	19	14.5	51	25.5	17	16			41
42-0120-08		100	85.5			28.6						38												57
42-0120-04		112.5	98.5			41.3						51												70
42-0120-05		73	57			N/A			M12 x 1.75 x 13			12.5												28.5
42-0120-06	44.5	86	69.5	10	8		27	28.58		8.7	25.5	25.5	50.8	51	8.7	24	17.5	63.5	32	25	18			41
42-0120-09		98.5	82.5			25.4						38												54
42-0120-07		114.5	98.5			41.3						51												70

All dimensions are in mm.