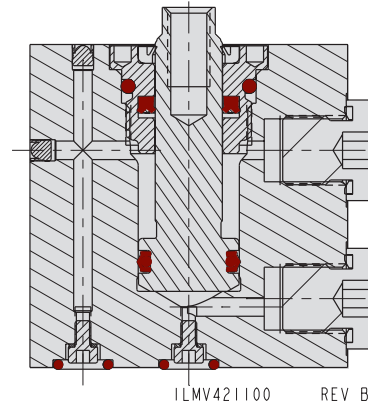


Cylinders

Combination Block Cylinders Specifications

Double Acting with Bottom Manifold and Standard Side Porting

- Combination block cylinders are available in 5 sizes with 2 stroke lengths each.
- Flush top design makes this cylinder ideal for use in close push or pull applications.
- Push or pull from the fixture surface using manifold ports.
- The G 1/4 side ports provide easy access to standard plumbing alternate ports.
- End manifold provides an alternative to other side manifold block cylinders.
- Stock end attachments available or make your own.



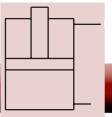
F-10

Specifications

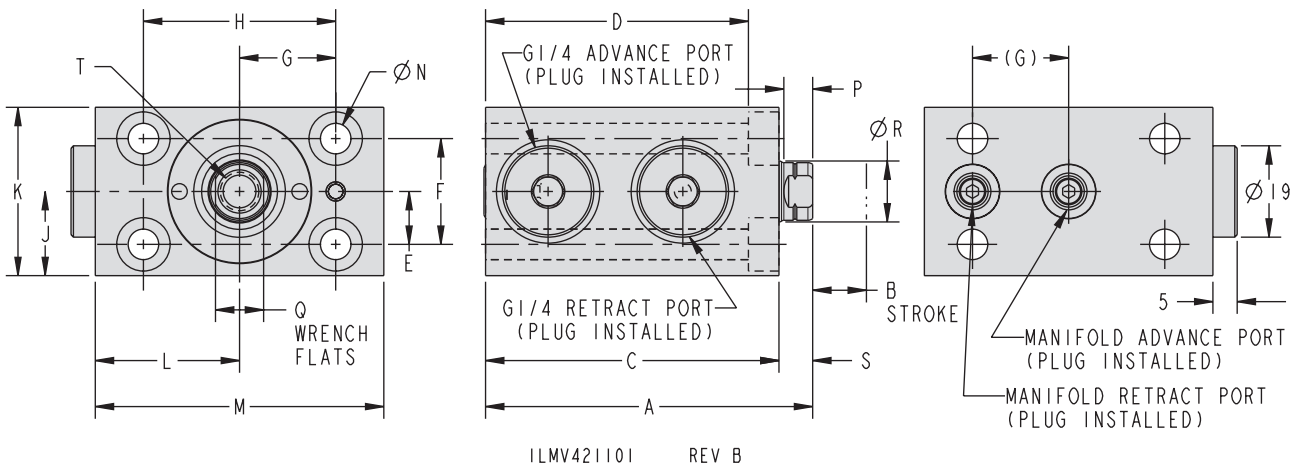
Model No.	Cylinder Capacity (kN)*		Stroke (mm)	Body Size (mm)	Minimum Length (mm)	Piston Area (cm ²)		Oil Capacity (cm ³)	
	Extend	Retract				Extend	Retract	Extend	Retract
Double Acting (D/A) Cylinders, actuated hydraulically in both directions.									
42-1121-00			16		68			4.6	2.5
42-1121-01	10	5.5	50	35 x 60	102	2.9	1.6	14.3	7.9
42-1121-02			20		71			10.1	6.2
42-1121-03	17.7	10.8	50	45 x 65	101	5.1	3.1	25.3	15.4
42-1121-04			25		85			19.8	12.7
42-1121-05	27.7	17.7	50	55 x 75	110	7.9	5.1	39.6	25.3
42-1121-06			25		89			33.5	20.8
42-1121-07	46.8	29	50	63 x 85	114	13.4	8.3	66.9	41.6
42-1121-08			25		100			50.7	30.9
42-1121-09	70.9	43.2	50	75 x 100	125	20.3	12.4	101.3	61.8

* Cylinder capacities are listed at 350 bar (35 MPa) maximum operating pressure. The output force is adjustable by varying the hydraulic system pressure. To determine approximate output force for your application, multiply the Piston Area times Your System Operating Pressure. Actual force may vary slightly due to friction loss, seal and wiper drag.





Combination Block Cylinder Dimensions



F-11

Dimensions

Model No.	A	B	C	D	E	F	G	H	J	K	L	M	N	P	Q	R	S	T	
Double Acting (D/A) Cylinders, actuated hydraulically both directions.																			
42-1121-00	68	16	61	54.6	11	22	20	40	17.5	35	30	60	6.3	6	10	12.7	7	M8 x 1.25 x 15	
42-1121-01	102	50	95	88.6															
42-1121-02	71	20	64	55.5	15	30	25	50	22.5	45	32.5	65	8.5	6	13	15.8	7	M10 x 1.5 x 15	
42-1121-03	101	50	94	85.5															
42-1121-04	85	25	75	64.5	17.5	35	27.5	55	27.5	55	37.5	75	10.5	9	16	19	10	M12 x 1.75 x 15	
42-1121-05	110	50	100	89.5															
42-1121-06	89	25	79	68.5	20	40	31.5	63	31.5	63	42.5	85	10.5	9	22	25.4	10	M16 x 2 x 25	
42-1121-07	114	50	104	93.5															
42-1121-08	100	25	90	77	22.5	45	38	76	37.5	75	50	100	13	9	27	31.7	10	M20 x 2.5 x 30	
42-1121-09	125	50	115	102															

For proper sealing, the mating surface must be flat within 0.08 mm with a maximum surface roughness of 1.6 μm R_a .

