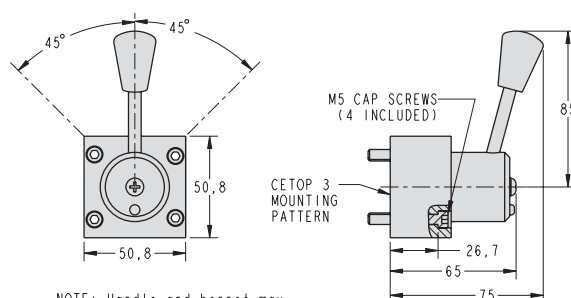
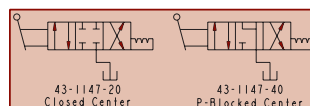


# Directional Control Valves

## 3-Position 4-Port Manually Operated

### Manual and Solenoid 3-Position 4-Port

- These valves offer the features to efficiently control a double acting workholding system. (They may also be used to control single acting systems working in opposition.)
- Valves incorporate extremely low leakage (4 drops per minute per seal) pressure balanced shear type seals and poppet designs.
- Shears and poppets are heat treated. They are spring and pressure loaded against hardened steel wear surfaces to provide positive fluid control for hundreds of thousands of cycles.
- Equipped with rotary handle, this valve has an internal rotor that snaps into position ensuring accurate alignment of flow passages.
- Extensive use of anti-friction rotary bearings allows effortless handle rotation even when operating at 350 bar (35 MPa).
- All valves incorporate lightweight aluminum alloy bodies and are furnished with required standard length mounting bolts.
- Internal design promotes improved service life.



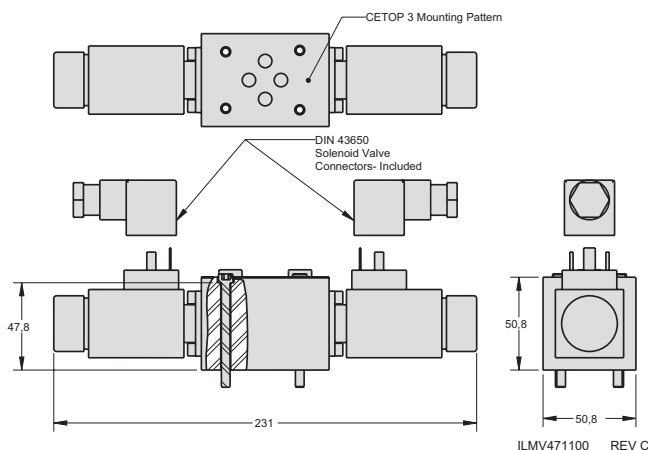
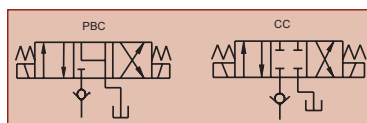
NOTE: Handle and bonnet may be repositioned 90° or 180° from position shown.

ILMV711102 REV C

NOTE: Maximum system flow rate is 5.7 l/minute for all VektFlo® special function valves unless otherwise noted.

Excess flow voids warranty.

Manual					
Model No.	Center	Seals	Fluid Temp. Maximum	Fluid Flow Maximum	Tank Port Pressure
43-1147-20	Closed Center	NBR PTFE	70° C	5.7 l/min	17 bar (1.7 MPa)
43-1147-40	P-Blocked Center	NBR PTFE	70° C	5.7 l/min	17 bar (1.7 MPa)



ILMV471100 REV C



Solenoid					
Model No.	Function	Valve Connector Part No.	Solenoid Voltage	Power Usage (watts)	Duty Rating
47-1123-21	Closed Center	85-5342-91	24 VDC	27.6	100%
47-1123-40	P-Blocked Center	85-5342-91	24 VDC	27.6	