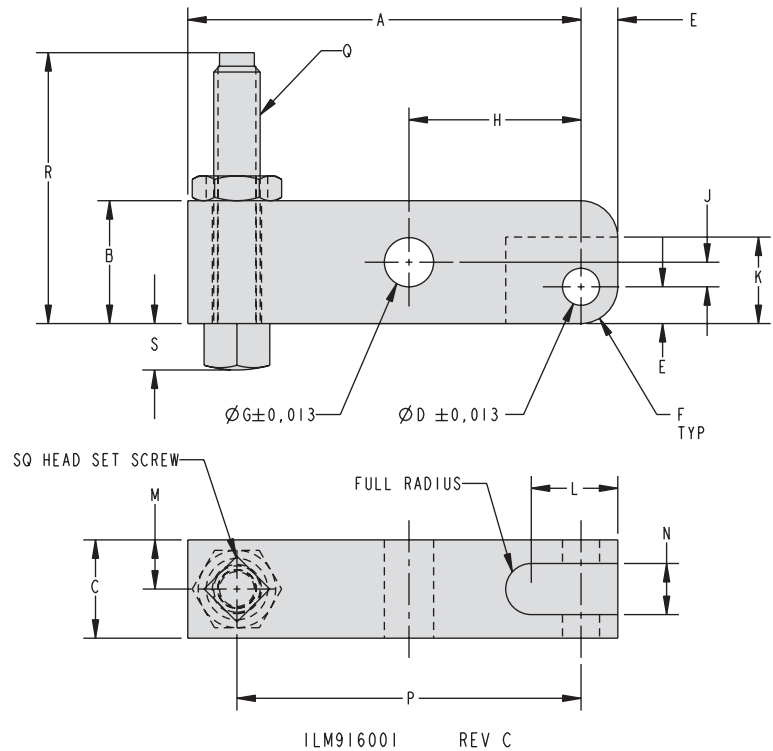


# Link Clamp Levers

## Link Clamp Lever Dimensions



### Dimensions

Model No.	Cap. SA (kN)	Cap. DA (kN)	A	B	C	D	E	F	G	H	J
<b>Standard Length Lever. 1:1 Ratio</b>											
91-6004-03	1.5	2	50.8	16.0	12.7	4.788	4.8	4.8	6.363	22.2	3.2
91-6006-03	3	5	63.5	22.4	16.0	6.388	6.4	6.4	9.538	28.6	3.2
91-6009-03	6	11	79.5	31.8	25.4	9.563	9.5	9.7	12.713	34.9	4.7
91-6014-03	13	22	101.6	44.5	31.8	12.738	12.7	12.7	15.888	44.5	6.4
<b>Extended Length Lever without Tapped Hole 2:1 Ratio</b>											
91-6004-02	1.5	2	73.2	16.0	12.7	4.788	4.8	4.8	6.363	22.2	3.2
91-6006-02	3	5	92.2	22.4	16.0	6.388	6.4	6.4	9.538	28.6	3.2
91-6009-02	6	11	114.3	31.8	25.4	9.563	9.5	9.7	12.713	34.9	4.7
91-6014-02	13	22	146.1	44.5	31.8	12.738	12.7	12.7	15.888	44.5	6.4
Model No.	Cap. SA (kN)	Cap. DA (kN)	K	L	M	N	P	Q	R	S	
<b>Standard Length Lever. 1:1 Ratio</b>											
91-6004-03	1.5	2	11.2	11.2	6.4	6.6	44.5	M6 x 1	36.8	6.0	
91-6006-03	3	5	14.2	14.2	7.9	8.1	57.2	M8 x 1.25	42.3	8.0	
91-6009-03	6	11	20.6	20.6	12.7	13.0	69.9	M10 x 1.50	62.8	10.0	
91-6014-03	13	22	30.2	30.2	16.0	16.0	88.9	M12 x 1.75	83.3	12.0	
<b>Extended Length Lever without Tapped Hole 2:1 Ratio</b>											
91-6004-02	1.5	2	11.2	11.2	6.4	6.6	N/A	N/A	N/A	N/A	
91-6006-02	3	5	14.2	14.2	7.9	8.1	N/A	N/A	N/A	N/A	
91-6009-02	6	11	20.6	20.6	12.7	13.0	N/A	N/A	N/A	N/A	
91-6014-02	13	22	30.2	30.2	16.0	16.0	N/A	N/A	N/A	N/A	

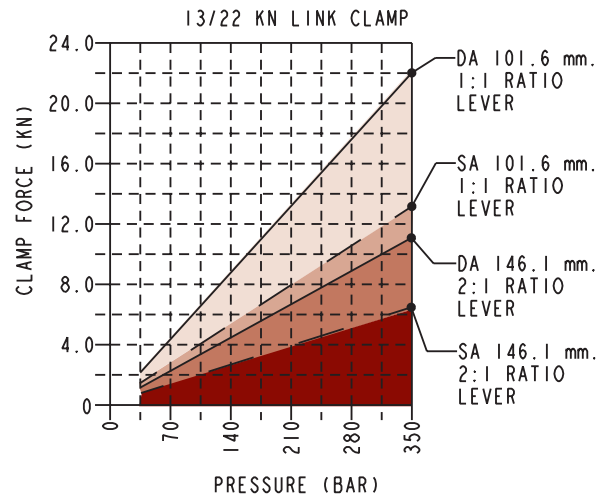
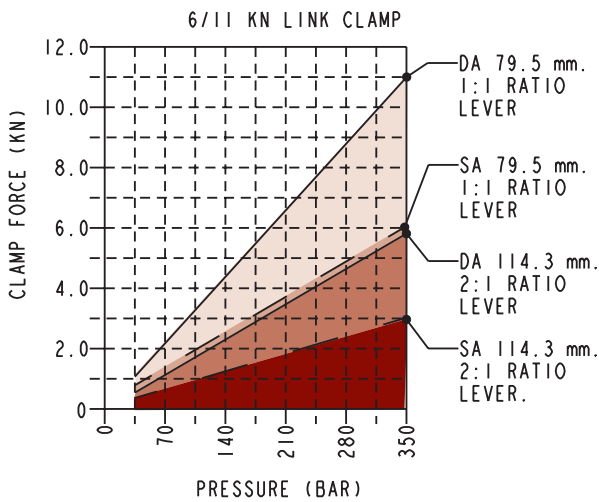
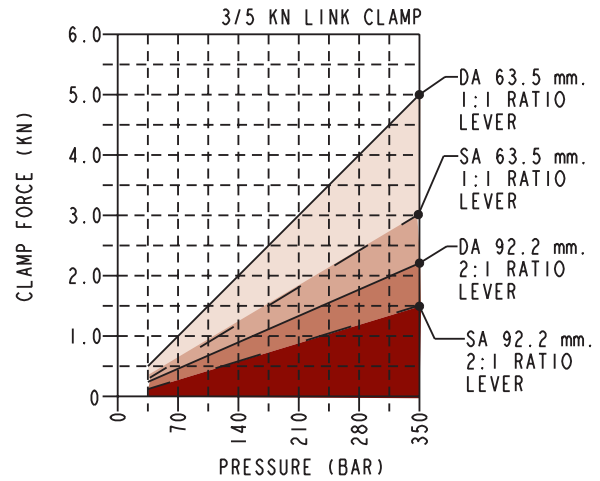
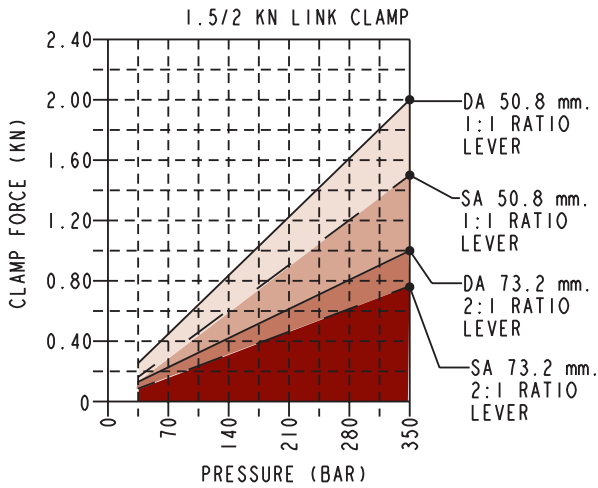
P-5



# Link Clamp Levers

## Link Clamp Lever Dimensions

### Link Clamp Lever Output Curves



DOUBLE ACTING (DA) —————  
 SINGLE ACTING (SA) — — — — —

ILM916002 REV B

**NOTE:** Modifications to levers that result in clamp ratios below 1:1 are not in the safe operating zone for the corresponding link clamp and could result in premature failure.

