

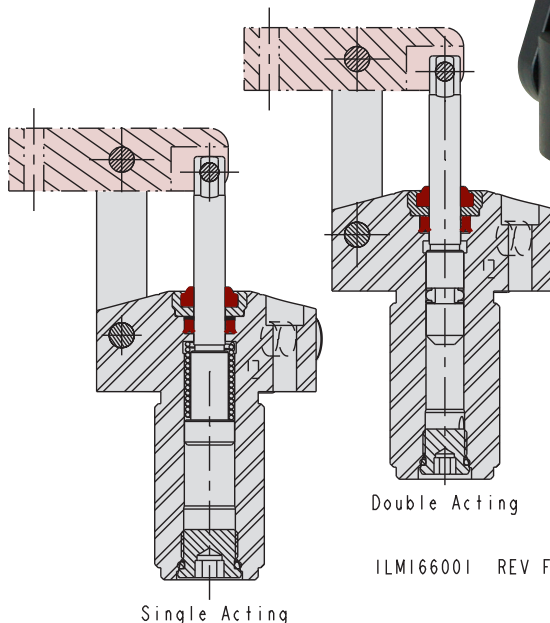
Link Clamps

Link Clamp Specifications

D-6

Single and Double Acting

- Available in sizes from 1.5 kN to 22 kN capacities at 350 bar (35 MPa) maximum operating pressure.
- Single piece body/pivot design for accuracy and long life.
- Link clamps clear large obstructions better than other types of clamps.
- Pivot pins are corrosion resistant and heat treated.
- Manifold mounted or standard plumbed using G 1/4 or G 1/8 S-Series fittings (face seal Model No. 39-0510-25 included).
- Fluorocarbon seals are available on request.
- Levers sold separately — see Section P.



Double Acting

ILMI66001 REV F

Single Acting

Specifications

Model No.	Cylinder Capacity* (kN)	Vertical Clamp Stroke** (mm)	Body Thread	Standard Lever Length (mm)	Effective Piston Area (cm ²)	Oil Capacity (cm ³)		Maximum Flow Rate*** (l/min)	Optional Flow Control Model No.****
						Extend	Retract		
Single Acting (S/A) Cylinders, actuated hydraulically one direction spring returned.									
41-6610-40	1.5	2.3	M28 x 1.5 - 6G	22.4	0.49	1.69	N/A	0.20	47-0203-70
41-6610-60	3	3.1	M38 x 1.5 - 6G	28.7	0.97	4.70	N/A	0.56	47-0203-71
41-6610-90	6	3.6	M48 x 1.5 - 6G	35.1	1.98	13.45	N/A	1.61	47-0203-73
41-6611-40	13	4.6	M65 x 1.5 - 6G	44.5	5.06	35.20	N/A	4.23	47-0203-74
Double Acting (D/A) Cylinders, actuated hydraulically both directions.									
41-6620-40	2	2.3	M28 x 1.5 - 6G	22.4	0.71	1.69	0.52	0.20	47-0203-70
41-6620-60	5	3.1	M38 x 1.5 - 6G	28.7	1.60	4.70	1.85	0.56	47-0203-71
41-6620-90	11	3.6	M48 x 1.5 - 6G	35.1	3.88	13.45	6.64	1.61	47-0203-73
41-6621-40	22	4.6	M65 x 1.5 - 6G	44.5	7.92	35.20	12.67	4.23	47-0203-74

* Clamp capacities are listed at 350 bar (35 MPa) maximum operating pressure with a standard length link clamp lever installed. See graph in Section P for clamping force with various lever lengths. Minimum operating pressure is 52 bar (5.2 MPa) for single acting and 35 bar (3.5 MPa) for double acting devices. The clamping force is adjustable by varying the hydraulic system pressure. (Actual force will vary slightly due to mechanical inefficiencies and friction.)

** Equal to +/- 3° with standard lever.

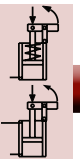
*** To insure maximum service life and trouble-free operation, restrict fluid flow to the above flow ratings when clamping. If you are unable to measure flow rates, the devices should be positioned in no less than 1/2 second. These recommendations apply when using the standard lever. When using the optional long lever or your custom lever, please restrict the flow rates to position the lever in no less than 1 second.

**** In-port flow control requires the use of manifold mount ports.

Optional in-port flow control is a meter-in device with reverse free flow check valve.



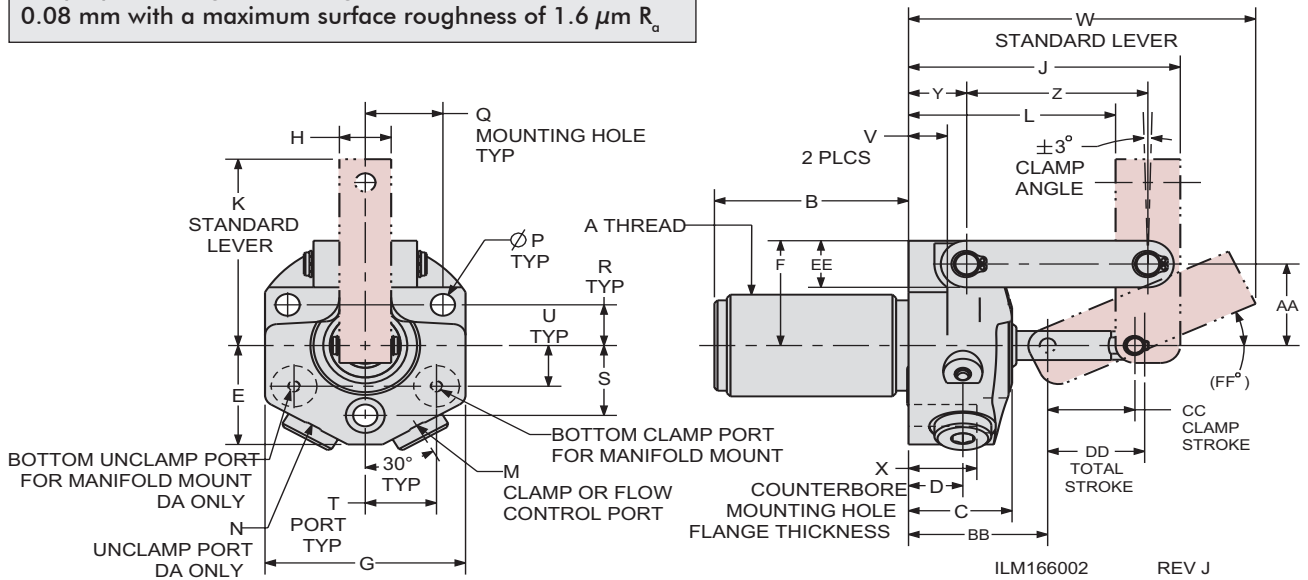
Link Clamps



Link Clamp Dimensions

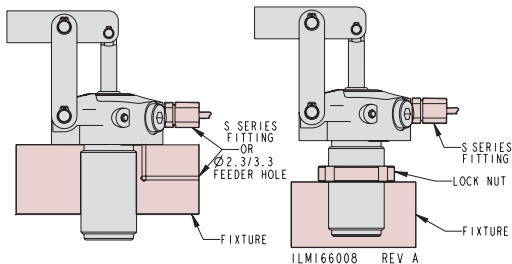
D-7

For proper sealing, the mating surface must be flat within 0.08 mm with a maximum surface roughness of 1.6 μm R_a



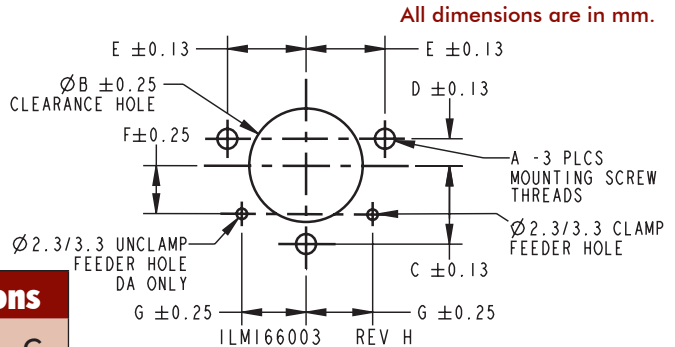
Dimensions

Model No.	A	B	C	D	E	F	G	H	J	K	L	M	N	P	Q
Single Acting (S/A) Cylinders, actuated hydraulically one direction spring returned.															
41-6610-40	M28 x 1.5 - 6G	47.6	25.4	13.3	27.0	28.7	49.2	12.7	66.8	50.8	50.8	G 1/8	N/A	5.9	19.1
41-6610-60	M38 x 1.5 - 6G	57.2	33.3	15.9	33.3	38.1	63.5	16.0	85.9	63.5	63.5	G 1/8	N/A	7.1	25.4
41-6610-90	M48 x 1.5 - 6G	63.5	41.3	21.2	41.3	47.8	82.6	25.4	109.5	79.5	77.7	G 1/4	N/A	11.1	33.3
41-6611-40	M65 x 1.5 - 6G	76.2	47.6	22.2	54.0	60.5	104.8	31.8	143.8	101.6	99.3	G 1/4	N/A	13.1	42.9
Double Acting (D/A) Cylinders, actuated hydraulically both directions.															
41-6620-40	M28 x 1.5 - 6G	47.6	25.4	13.3	27.0	28.7	49.2	12.7	66.8	50.8	50.8	G 1/8	G 1/8	5.9	19.1
41-6620-60	M38 x 1.5 - 6G	57.2	33.3	15.9	33.3	38.1	63.5	16.0	85.9	63.5	63.5	G 1/8	G 1/8	7.1	25.4
41-6620-90	M48 x 1.5 - 6G	63.5	41.3	21.2	41.3	47.8	82.6	25.4	109.5	79.5	77.7	G 1/4	G 1/4	11.1	33.3
41-6621-40	M65 x 1.5 - 6G	76.2	47.6	22.2	54.0	60.5	104.8	31.8	143.8	101.6	99.3	G 1/4	G 1/4	13.1	42.9
Model No.	R	S	T	U	V	W	X	Y	Z	AA	BB	CC	DD	EE	FF
Single Acting (S/A) Cylinders, actuated hydraulically one direction spring returned.															
41-6610-40	11.1	19.1	17.5	11.1	9.5	85.1	16.8	14.3	44.5	22.2	34.2	21.4	23.8	12.7	24°
41-6610-60	12.7	25.4	24.6	9.5	12.7	106.8	12.8	19.1	54.0	28.6	43.6	26.2	28.6	19.1	29°
41-6610-90	15.9	31.8	31.8	11.1	12.7	135.9	24.5	22.2	69.9	34.9	55.6	31.7	34.1	25.4	29°
41-6611-40	19.1	41.3	41.3	15.9	19.1	171.5	18.9	28.6	85.7	44.5	66.7	41.3	44.5	31.8	27.5°
Double Acting (D/A) Cylinders, actuated hydraulically both directions.															
41-6620-40	11.1	19.1	17.5	11.1	9.5	85.1	16.8	14.3	44.5	22.2	34.2	21.4	23.8	12.7	24°
41-6620-60	12.7	25.4	24.6	9.5	12.7	106.8	12.8	19.1	54.0	28.6	43.6	26.2	28.6	19.1	29°
41-6620-90	15.9	31.8	31.8	11.1	12.7	135.9	24.5	22.2	69.9	34.9	55.6	31.7	34.1	25.4	29°
41-6621-40	19.1	41.3	41.3	15.9	19.1	171.5	18.9	28.6	85.7	44.5	66.7	41.3	44.5	31.8	27.5°



Manifold Port/Bolt Mounting Dimensions

Model No.	Cap. (kN)	A	B	C	D	E	F	G
Double Acting (D/A) Cylinders, actuated hydraulically both directions.								
41-66X0-40	2	M5 x 0.8	28.58	19.05	11.10	19.05	11.10	17.48
41-66X0-60	5	M6 x 1	39.67	25.40	12.70	25.40	9.53	24.61
41-66X0-90	11	M10 x 1.5	49.20	31.75	15.88	33.32	11.10	31.75
41-66X1-40	22	M12 x 1.75	66.00	41.28	19.05	42.85	15.88	41.28



NOTE: Levers are to be adjusted to within +/- 3° of nominal clamp angle to prevent premature failure.