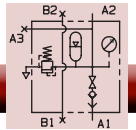


Palletized Fixture Accessories



Manual Pallet Decoupler

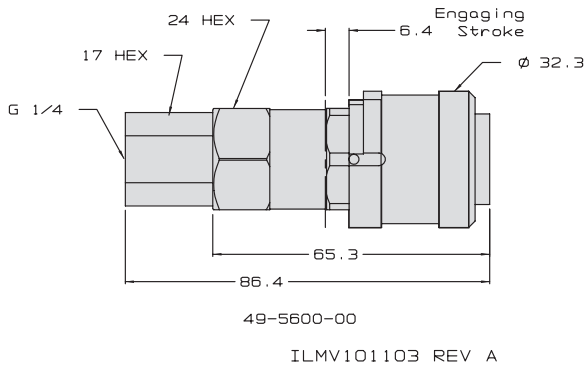


Manual Shutoff Valve Decoupler for Single Acting Systems

- This Decoupler is a convenient, self-contained package that includes a quick connect coupling, manual shutoff valve, accumulator (choose from horizontal or vertical arrangement), filter screen, pressure gauge, and over-pressure relief valve.
- Includes auxiliary ports that can be used for double acting pallet circuits or compressed air.
- External accumulator can be repositioned horizontally or vertically to suit the pallet layout.
- Quick Connect with female G 1/4, Model No. 49-5600-00, sold separately.

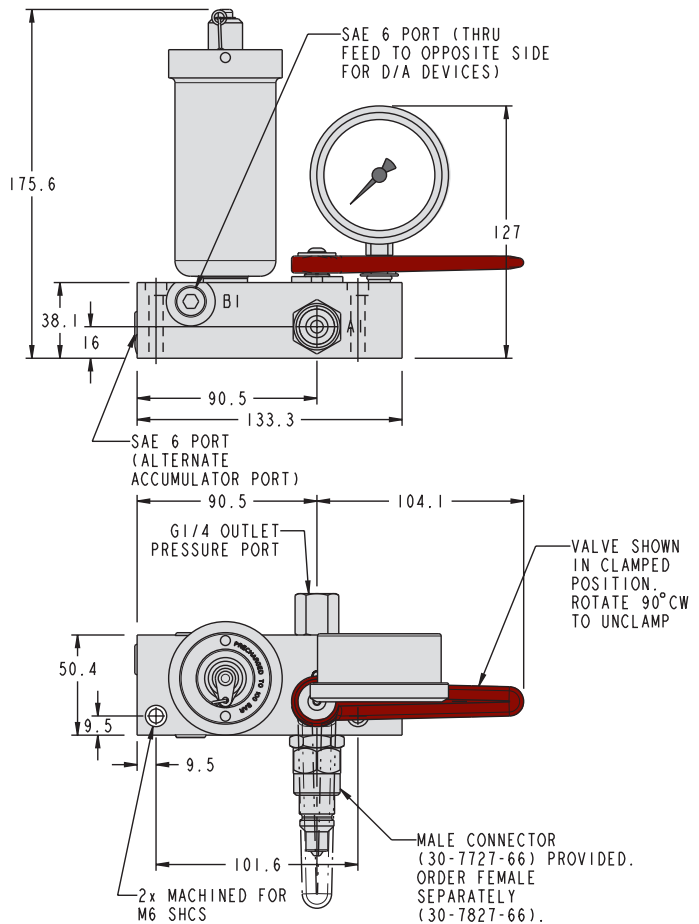
For proper sealing, the mating surface must be flat within 0.08 mm with a maximum surface roughness of 1.6 μm R_a .

Model No.	Pressure Range	Precharged Accumulator
45-6001-01	140-350 bar (14-35 MPa)	52 cm ³
45-6001-02	70-250 bar (7-25 MPa)	59 cm ³



Female Quick Disconnect
Model No.
49-5600-00

NOTE: Please check accumulator's gas pre-charge during your annual maintenance check. Consult factory if you require assistance.



K-2

NOTE: This Manual Shutoff Valve Decoupler must be used with a suitable pump which includes a 2-position/3-port, directional control valve for operation of one single acting circuit. Contact Vektek for considerations in the use of this Manual Shutoff Decoupler to control double acting circuits.

ILMV101101 REV C