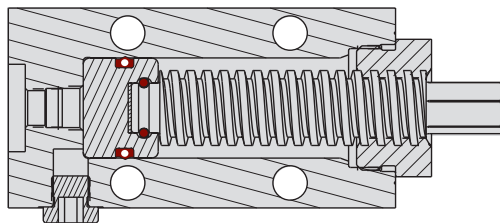


### Threaded Body and Block Body Styles

- Simple, inexpensive power supply for small systems.
- Ideally suited to powering work supports when used on manual clamping fixtures.
- Heavy duty threaded screw can be driven by a precision "nut runner" for fast and precise actuation (maximum RPM = 500).
- Block style bolts down. The threaded body can be mounted through a bulkhead with the two locknuts provided.



ILMV558100 REV A

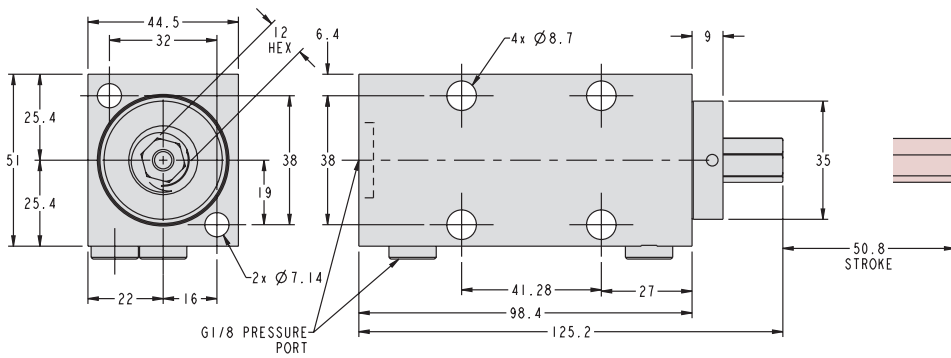
Max. Working Pressure ..... 350 bar (35 MPa)  
 Max. Displaced Oil ..... 26 cm<sup>3</sup>  
 Oil Displacement per revolution ..... 2.1 cm<sup>3</sup>  
 Body ..... BHC Steel  
 Screw ..... Hardened Acme threads

**NOTE:** Hoses are recommended for use on all circuits using screw pumps.

Applied Torque Produces Approximate Output Pressure*	
Torque (Nm)	Pressure (MPa)
13.5	70 bar (7)
27	140 bar (14)
34	205 bar (20.5)
40.5	275 bar (27.5)
47.5	350 bar (35)

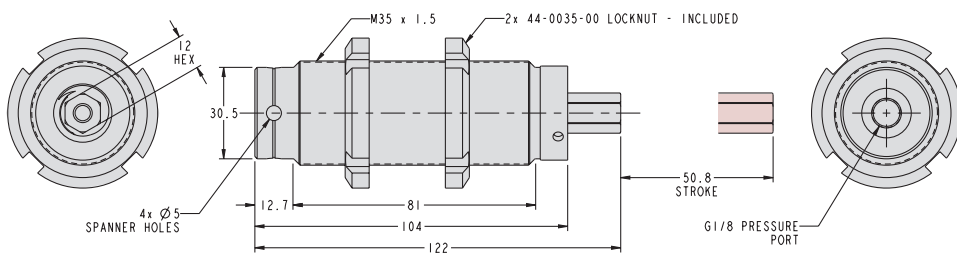
\*Do not exceed 50 Nm torque. Excess torque will create higher than allowed pressure which may damage downstream devices and increase the risk of personal injury to the operator.

**J-14**



BLOCK BODY SCREW PUMP MODEL NO. 45-5890-00 ILMV558101 REV D

**Block Body Screw Pump**  
 Model No. 45-5890-00



THREADED BODY SCREW PUMP MODEL No. 45589001 ILMV558102 REV A

**Threaded Body Screw Pump**  
 Model No. 45-5890-01