

Pull Cylinders

Block Pull Specifications

Single Acting

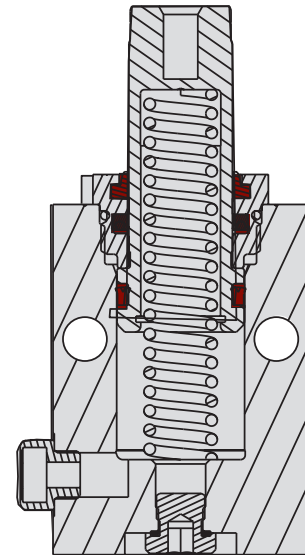
- No special mounting hardware required, secure these "draw" action cylinders by bolting in place.
- Adjustable force ranging from minimal to maximum cylinder capacity, just vary the hydraulic pressure.
- Normally extended piston provides a simple device for actuating clamping mechanisms, device manipulation or disappearing spring crowders.

Threaded plunger ends allow the attachment of custom end treatments or the use of bolts to pull "C" washers.

Chromed and hardened alloy steel plungers run longer with less wear and drag than other brands.

Vent port with bronze filter gives the cylinder a place to "breathe" and helps keep chips from drawing past wipers.

Specially designed springs run longer and require less maintenance.



ILMV201102 REV D

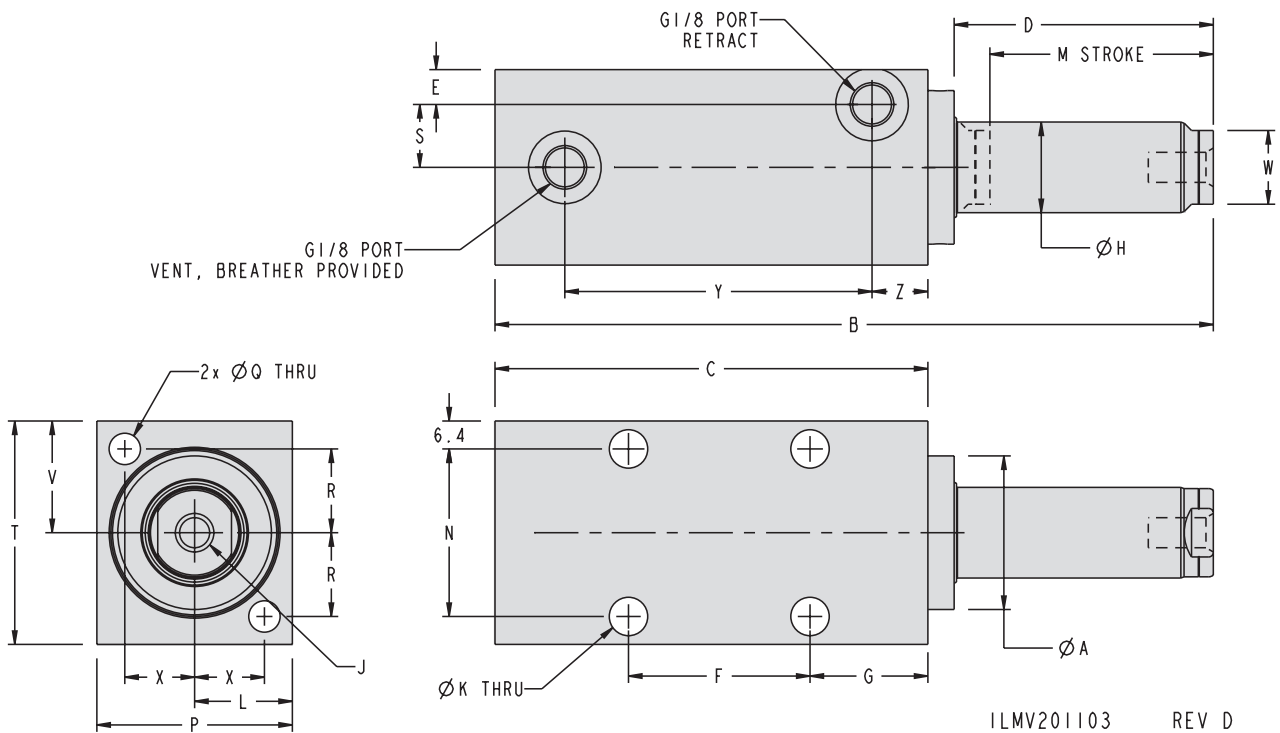
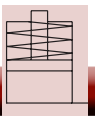
G-4

Specifications

Model No.	Cylinder Capacity**	Stroke (mm)	Body Size (mm)	Extended Height (mm)	Piston Area	Oil Capacity
	Retract				Retract	Retract
Single Acting (S/A) Cylinders, actuated hydraulically 1 direction, spring returned.						
42-5111-01	5.9	25.5	44.5 x 51	109	1.7	4.4
42-5111-02		51		163.5		8.8
42-5111-51	17.5	25.5	51 x 63.5	111	5.0	12.7
42-5111-52		51		165		25.4

* Cylinder capacities are listed at 350 bar (35 MPa) maximum operating pressure. The output force can be adjusted by varying the hydraulic system pressure. To calculate the approximate output force for your application, multiply the Piston Area times Your System Operating Pressure. Actual force may vary slightly due to frictional losses, seal and wiper drag and/or return spring forces.





G-5

ILMV201103 REV D

Dimensions												
Model No.	A	B	C	D	E	F	G	H	J	K	L	
Single Acting (S/A) Cylinders, actuated hydraulically 1 direction, spring returned.												
42-5111-01	35	109	69.5	33.5	8	N/A	27	20.64	M8 x 1.25 x 11	8.7	22	
42-5111-02		163.5	98.5	59		41.3						
42-5111-51	44.5	111	69.5	35.5	8	N/A	27	28.58	M12 x 1.75 x 13	25.5		
42-5111-52		165.5	98.5	61		41.3						
Model No.	M	N	P	Q	R	S	T	V	W	X	Y	Z
Single Acting (S/A) Cylinders, actuated hydraulically 1 direction, spring returned.												
42-5111-01	25.5	38.1	44.5	7.1	19	14.5	51	25.5	17	16	41	12.5
42-5111-02	51										70	
42-5111-51	25.5	50.8	51	87	24	17.5	63.5	32	25	18	41	12.5
42-5111-52	51										70	

All dimensions are in mm.