

Push/Pull Cylinders

Threaded Body Specifications

Single And Double Acting

- Available in pull capacities from 2.1 kN to 24.9 kN.
- Double Acting push capacities from 5.3 kN to 53.3 kN.
- Single acting plunger is spring extended, Hydraulically retracted.
- Several sizes provide a wide range of adjustment.
- If you need a straight-line guided model, order as a swing clamp (See page C-21).

Chromed and hardened alloy steel plungers run longer with less wear and drag than other brands.

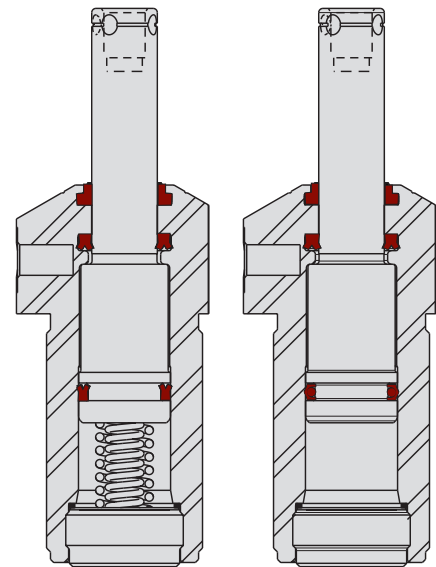
G Series porting is standard for easy access.

Vent port with bronze filter gives the cylinder a place to "breathe" and helps keep chips from drawing past wipers (Can be used for a remote breather line. Used as the double acting unclamp port).

Proprietary seal designs reduce leakage and increase seal life for longer lasting, more dependable cylinders.

Threaded plunger ends allow the attachment of arms, mechanisms or remote actuators.

Push/pull cylinders are not shipped with cap screws.



ILMV150108 REV C

G-2

Specifications

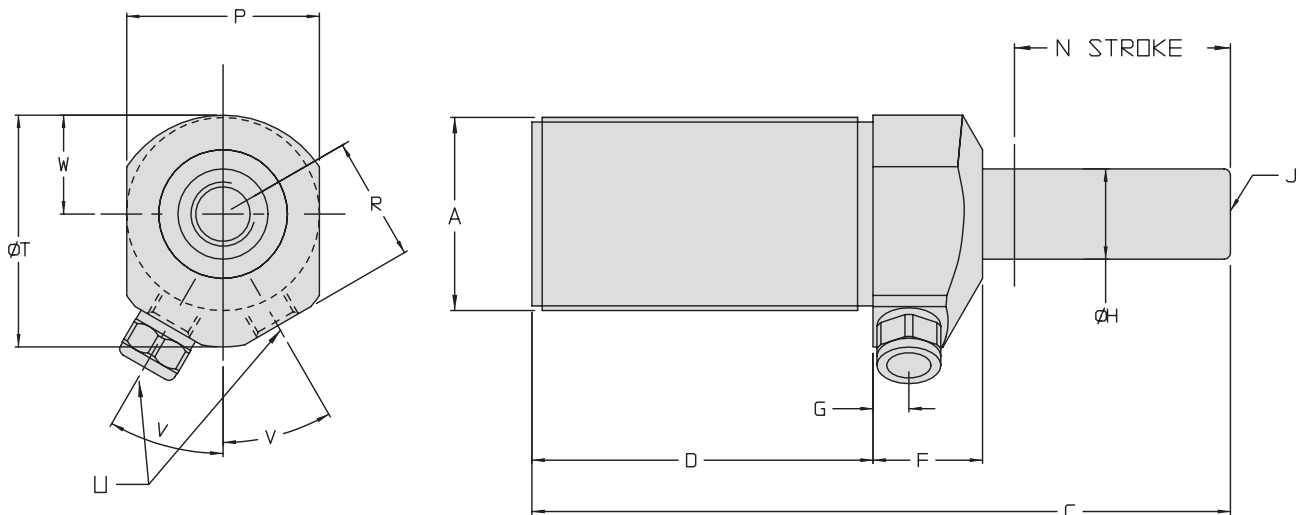
Model No.	Cylinder Capacity* (kN)		Stroke (mm)	Body Thread	Effective Piston Area (cm ²)		Oil Capacity (cm ³)	
	Extend	Retract			Extend	Retract	Extend	Retract
Single Acting (S/A) Cylinders, actuated hydraulically and spring returned.								
42-5010-51	N/A	2.1	14.5	M28 x 1.5	N/A	0.63	N/A	0.92
42-5010-91	N/A	6.2	20	M38 x 1.5	N/A	1.90	N/A	3.82
42-5011-31	N/A	13.7	29.5	M48 x 1.5	N/A	4.04	N/A	11.9
42-5018-00	N/A	24.9	42	M65 x 1.5	N/A	7.60	N/A	32
Double Acting (D/A) Cylinders, actuated hydraulically both directions.								
42-5020-51	5.3	2.1	14.5	M28 x 1.5	1.61	0.63	2.3	0.92
42-5020-91	13.3	6.2	20	M38 x 1.5	3.88	1.90	7.8	3.82
42-5021-31	27.1	13.7	29.5	M48 x 1.5	7.92	4.04	23	11.9
42-5028-00	53.3	24.9	42	M65 x 1.5	15.52	7.60	65.4	32

* Cylinder capacities are listed at 350 bar (35 MPa) maximum operating pressure. The output force can be adjusted by varying the hydraulic system pressure. To calculate the approximate output force for your application, multiply the Piston Area times Your System Operating Pressure. Actual force may vary slightly due to frictional losses, seal and wiper drag and/or return spring forces.



Push/Pull Cylinders

Threaded Body Dimensions



ILMV150111 REV B

G-3

Dimensions

Model No.	A	C	D	F	G	H	J
Single Acting (S/A) Cylinders, actuated hydraulically 1 direction. spring returned.							
42-5010-51	M28 x 1.5	102	44	25.5	13	11.13	M6 X 1.0 X 7
42-5010-91	M38 x 1.5	134	60	31	13	15.88	M10 X 1.5 X 12
42-5011-31	M48 x 1.5	172	79	32	13	22.23	M12 X 1.75 X 13
42-5018-00	M65 x 1.5	236	115.5	34	13	31.71	M16 X 2.0 X 19
Double Acting (D/A) Cylinders, actuated hydraulically both directions							
42-5020-51	M28 x 1.5	102	44	25.5	13	11.13	M6 X 1.0 X 7
42-5020-91	M38 x 1.5	134	60	31	13	15.88	M10 X 1.5 X 12
42-5021-31	M48 x 1.5	172	79	32	13	22.23	M12 X 1.75 X 13
42-5028-00	M65 x 1.5	236	115.5	34	13	31.71	M16 X 2.0 X 19
Model No.	N	P	R	T	U	V	W
Single Acting (S/A) Cylinders, actuated hydraulically 1 direction. spring returned.							
42-5010-51	14.5	32	20.5	38	G 1/8	25°	14
42-5010-91	20	38	26	47.5	G 1/8	35°	19.5
42-5011-31	29.5	47.5	31.5	60	G 1/4	30°	25.5
42-5018-00	42	65	37	73	G 1/4	30°	33
Double Acting (D/A) Cylinders, actuated hydraulically both directions							
42-5020-51	14.5	32	20.5	38	G 1/8	25°	14
42-5020-91	20	38	26	47.5	G 1/8	35°	19.5
42-5021-31	29.5	47.5	31.5	60	G 1/4	30°	25.5
42-5028-00	42	65	37	73	G 1/4	30°	33

All dimensions are in mm.