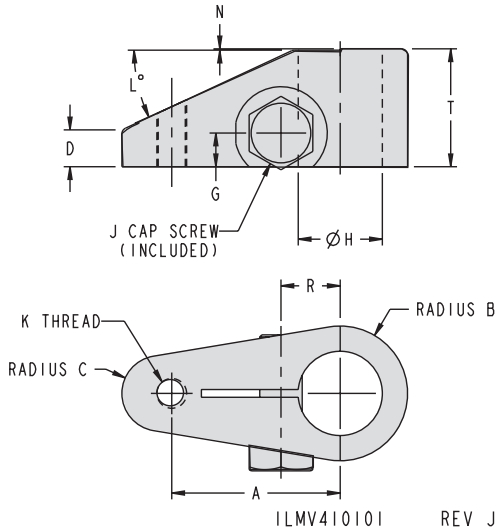


Swing Clamp Arms

TuffCam™ Low Profile Swing Clamp Arms



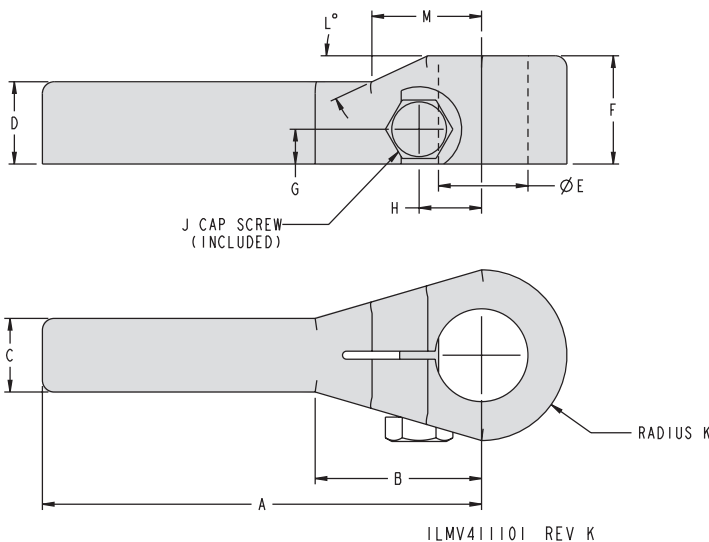
Low Profile Standard Arm Dimensions

Model No.*	Capacity (kN)	A	B	C	D	G	H	J	K	L	N	R	T
44-1031-00	22	63.5	25.5	14.5	16	12.5	31.75-31.80	M16 x 1.5	M12 x 1.75	25	0.5	22.5	44.5
44-1032-00	33	68	35	14.2	16.4	14.2	38.11-38.16	M16 x 1.5	M16 x 2	25	N/A	25.6	44.5

* 44-1031-00 For use with Low Profile Swing Clamp Models 41-4622-XX, 41-4222-XX
For an arm without a tapped hole order 91-5218-11

44-1032-00 For use with Low Profile Swing Clamp Models 41-4633-XX, 41-4233-XX
For an arm without a tapped hole order 91-5221-06

NOTE: Replacement Cap Screw for 44-1031-00 and 91-5218-11 is Model No. 21-5000-24
Replacement Cap Screw for 44-1032-00 and 91-5221-06 is Model No. 21-5000-28



All dimensions are in mm.

NOTE: Follow arm length limitations on page O-3

Low Profile Extended Arm Dimensions

Model No.*	Capacity (kN)	A	B	C	D	E	F	G	H	J	K	L	M
44-1131-00	22	165	71.1	28.5	19	31.75-31.80	44.5	12.5	22.5	M16 x 1.5	25.5	25	71.1
44-1132-00	33	180.3	68.3	30.2	33.8	38.11-38.16	44.5	14.2	25.6	M16 x 1.5	35	25	44.9

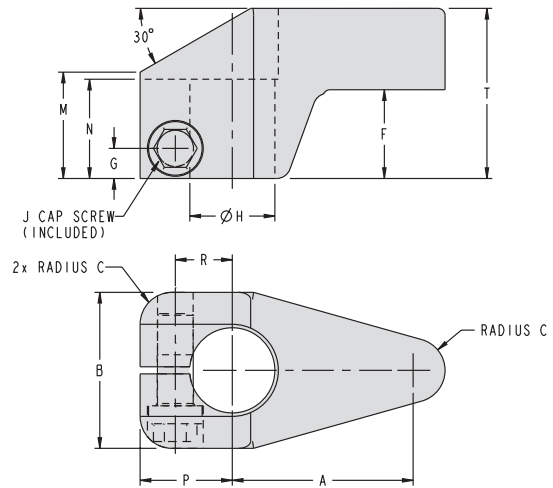
* 44-1131-00 For use with Low Profile Swing Clamp Models 41-4622-XX, 41-4222-XX

44-1132-00 For use with Low Profile Swing Clamp Models 41-4633-XX, 41-4233-XX

NOTE: Replacement Cap Screw for 44-1131-00 is Model No. 21-5000-24
Replacement Cap Screw for 44-1132-00 is Model No. 21-5000-28

Swing Clamp Arms

TuffCam™ Low Profile Swing Clamp Arms



ILMV414101 REV J

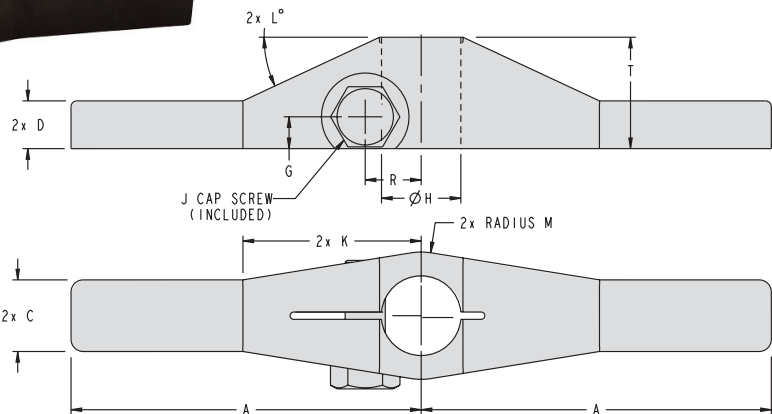
Low Profile Upreach Arm Dimensions

Model No.*	Capacity (kN)	A	B	C	F	G	H	J	M	N	P	R	T
44-1431-00	22	76	51	14.5	36.5	13.5	31.75-31.80	M16 x 1.5	44.5	38	38	22.5	70
44-1432-00	33	81	69.9	14.3	39.6	13.5	38.11-38.16	M16 x 1.5	44.5	45	41.3	25.6	76.2

* 44-1431-00 For use with Low Profile Swing Clamp Models 41-4622-XX, 41-4222-XX

44-1432-00 For use with Low Profile Swing Clamp Models 41-4633-XX, 41-4233-XX

NOTE: Replacement Cap Screw for 44-1431-00 and 44-1432-00 is Model Number 21-5000-25



ILMV412102 REV J

All dimensions are in mm.

Low Profile Double Ended Arm Dimensions

Model No.*	Capacity (kN)	A	C	D	G	H	J	K	L	M	R	T
44-1231-00	22	140	28.5	19	12.5	31.75-31.80	M16 x 1.5	70.5	25	25.5	22.5	44.5
44-1232-00	33	180.3	30.2	33.8	14.2	38.11-38.16	M16 x 1.5	44.6	25	35	25.6	44.5

* 44-1231-00 For use with Low Profile Swing Clamp Models 41-4622-XX, 41-4222-XX

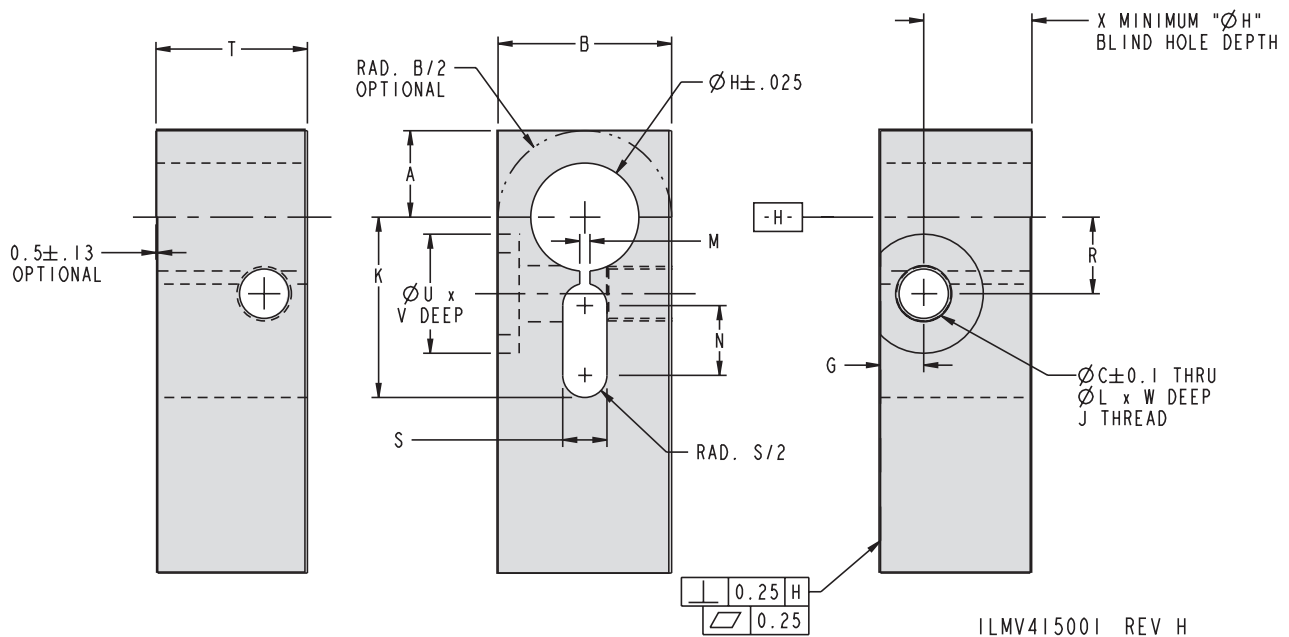
44-1232-00 For use with Low Profile Swing Clamp Models 41-4633-XX, 41-4233-XX

NOTE: Replacement Cap Screw for 44-1231-00 is Model No. 21-5000-24
Replacement Cap Screw for 44-1232-00 is Model No. 21-5000-28



Swing Clamp Arms

Recommended Machine Dimensions for Customer-Produced TuffCam™ Low Profile Swing Clamp Arms



End user must add tapped hole to arm in proper location/orientation for their application.

See arm clocking details on page C-12 for locating arm clocking feature tapped holes.

Customer Produced Low Profile Arm Dimensions

Arm Series	Swing Clamp Force (kN)	A	B	C	G	H	J	K	L	M	N	R	S	T	U	V	W	X	
																		S/A	D/A
Recommended Machining Dimensions for Custom-Made Low Profile Swing Clamp Arms																			
44-1031-00	22	25.4	51	14.5	12.7	31.78	M16 x 1.5-6H	53	16.5	2.9	20.5	22.5	13	44.5	35	6.2	25.7	43.2	32.8
44-1131-00																			
44-1231-00																			
44-1032-00	33	35	70	14.5	14.2	38.14	M16 x 1.5-6H	59	16.5	3.2	N/A	25.6	14.3	44.5	35	9.6	25.5	50.8	31.0
44-1132-00																			
44-1232-00																			

Hex Head Cap Screw for use with low profile standard, extended and double ended arms series:

44-1031-00, 44-1131-00, and 44-1231-00 use 21-5000-24
44-1032-00, 44-1132-00, and 44-1232-00 use 21-5000-28

All dimensions are in mm.

NOTE: Follow arm length limitations on page O-3

O-10

