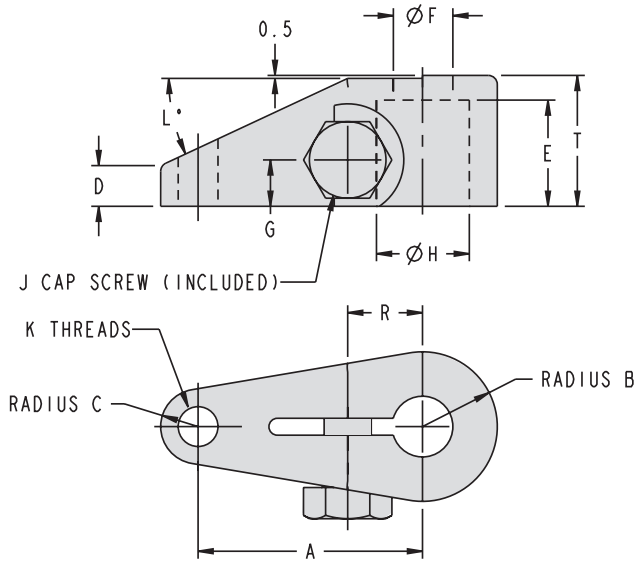


Swing Clamp Arms

Standard Length and Upreach Dimensions



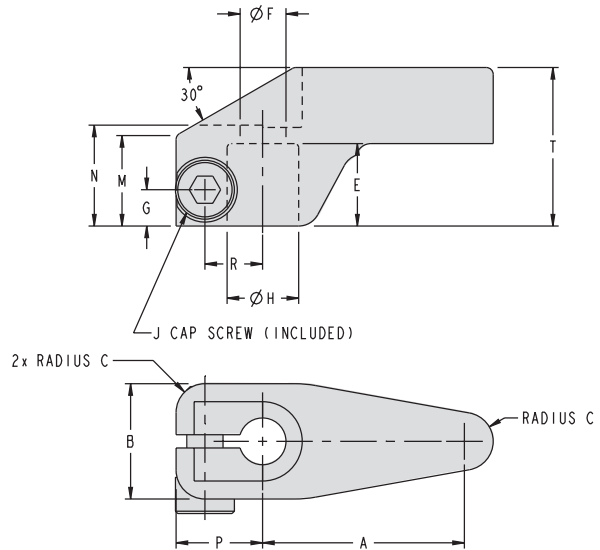
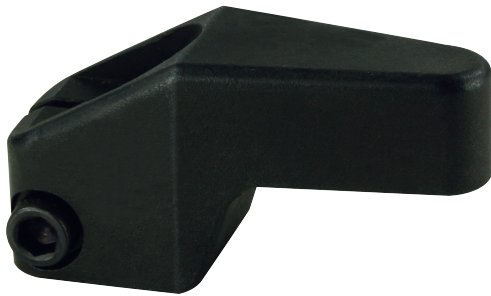
Clacking feature tapped hole location detail is on page C-2 for TuffCam™ and on C-29 for Standard Swing Clamps.

ILMV410100 REV G

Standard Arm Dimensions

Model No.	Capacity (kN)	A	B	C	D	E	F	G	H	J	K	L	R	T
44-1011-00	2	27	9.5	4.5	6.5	12.5	7	7	11.13 - 11.18	M6 x 1.0	M6 x 1	22	9.5	16
44-1015-00	4.9	38	12.5	6.5	7.5	18	10.5	8	15.89 - 15.94	M8 x 1.25	M8 x 1.25	25	12.7	22
44-1022-00	11.6	51	17.5	9.5	12	25.5	13.5	9.5	22.24 - 22.29	M10 x 1.25	M10 x 1.5	25	16.6	32
44-1031-01	22	63.5	25.5	14.5	16	36.5	16.5	12.5	31.75 - 31.80	M16 x 1.5	M12 x 1.75	25	24.6	44.5

All dimensions are in mm.



ILMV414100 REV D

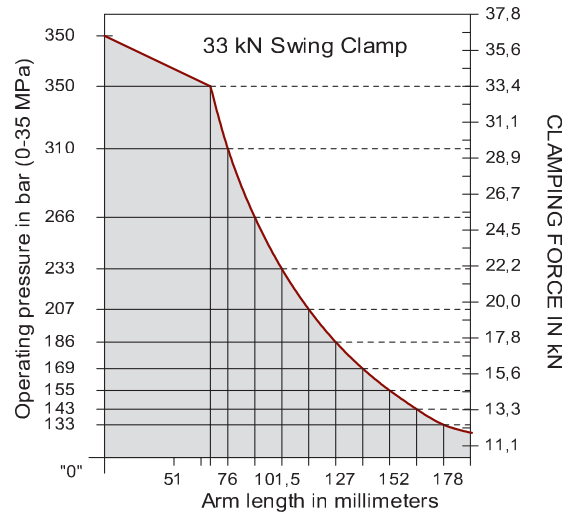
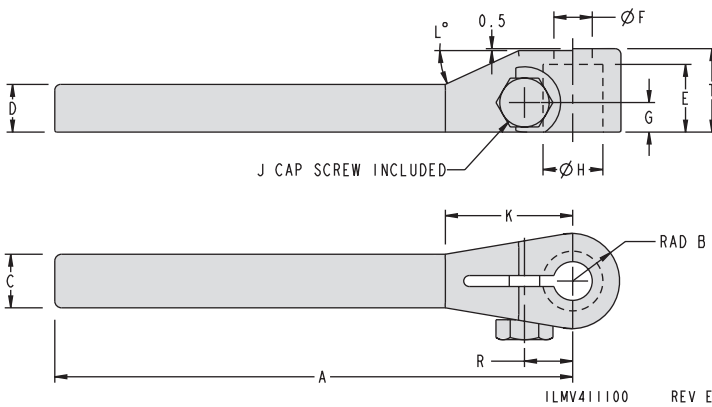
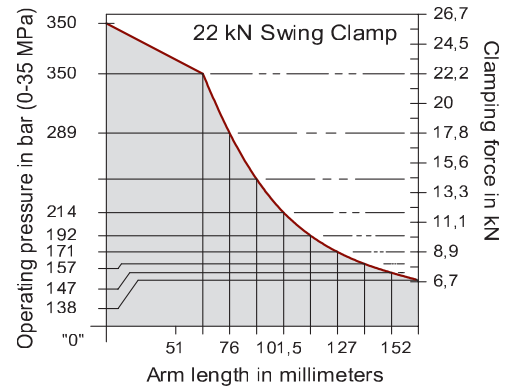
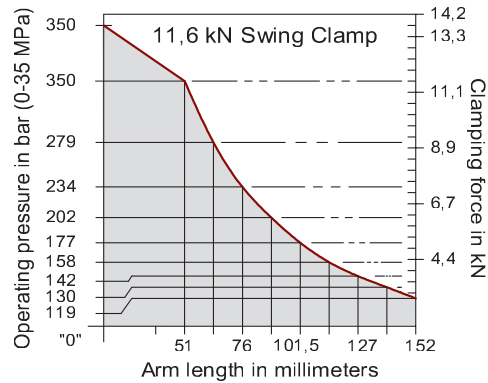
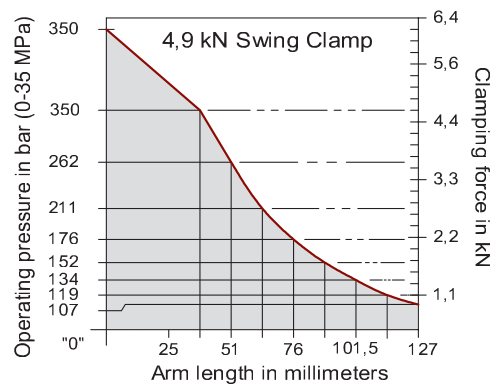
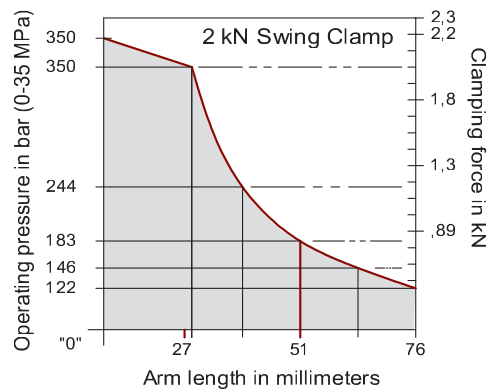
Upreach Arm Dimensions

Model No.	Capacity (kN)	A	B	C	E	F	G	H	J	M	N	P	R	T
44-1411-00	2	32	19	5	12.5	7	6.5	11.13 - 11.18	M6 x 1	12.5	16	16	9.5	25.5
44-1415-00	4.9	44.5	25.5	6.5	18	10.5	8	15.89 - 15.94	M8 x 1.25	19	22	19	12.5	35
44-1422-00	11.6	63.5	35	9.5	25.5	13.5	9.5	22.24 - 22.29	M10 x 1.25	26.5	32	26	16.5	51
44-1431-01	22	76	51	14.3	36.6	16.7	13.5	31.75 - 31.80	M16 x 1.5	38	44.5	38	24.6	70



Swing Clamp Arms

Arm Length Pressure Limitations Extended Arm Dimensions



Arm lengths and operating pressures at or below the curves shown are in the safe operating zones for the corresponding swing clamp model indicated.

ILMV415100 REV B

NOTE: Follow arm length limitations above.

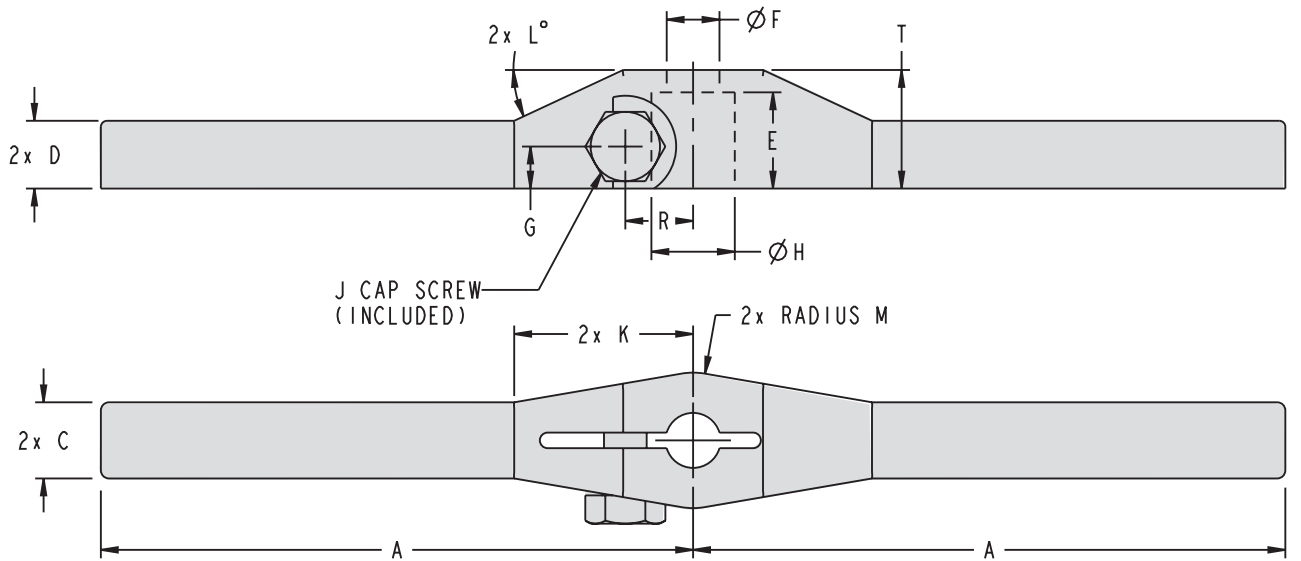
Clamping feature tapped hole location detail is on page C-2 for TuffCam™ and on C-29 for Standard Swing Clamps.

Extended Arm Dimensions														
Model No.	Capacity (kN)	A	B	C	D	E	F	G	H	J	K	L	R	T
44-1111-00	2	82.5	9.5	10.5	8.5	12.5	7	7	11.13-11.18	M6 x 1.00	26	22	9.5	16
44-1115-00	4.9	136.5	12.5	14.5	12.5	18	10.5	8	15.89-15.94	M8 x 1.25	33	25	12.7	22
44-1122-00	11.6	162	17.5	19	16	25.5	13.5	9.5	22.24-22.29	M10 x 1.25	50.5	25	16.6	32
44-1131-01	22	165	25.5	28.5	19	36.5	16.5	12.5	31.75-31.80	M16 x 1.50	70.5	25	24.6	44.5

All dimensions are in mm.

Swing Clamp Arms

Double Ended Arm Dimensions



ILMV412100 REV E



Double Ended Arm Dimensions

Model No.	Capacity (kN)	A	C	D	E	F	G	H	J	K	L	M	R	T
44-1211-00	2	70	10.5	8.5	12.5	7	7	11.13 - 11.18	M6 x 1	26	22	9.5	9.5	16
44-1215-00	4.9	111	14.5	12.5	18	10.5	8	15.89 - 15.94	M8 x 1.25	33	25	12.5	12.7	22
44-1222-00	11.6	136	19	16	25.5	13.5	9.5	22.24 - 22.29	M10 x 1.25	50.5	25	17.5	16.6	32
44-1231-01	22	140	28.5	19	36.5	16.5	12.5	31.75 - 31.80	M16 x 1.5	70.5	25	25.5	24.6	44.5

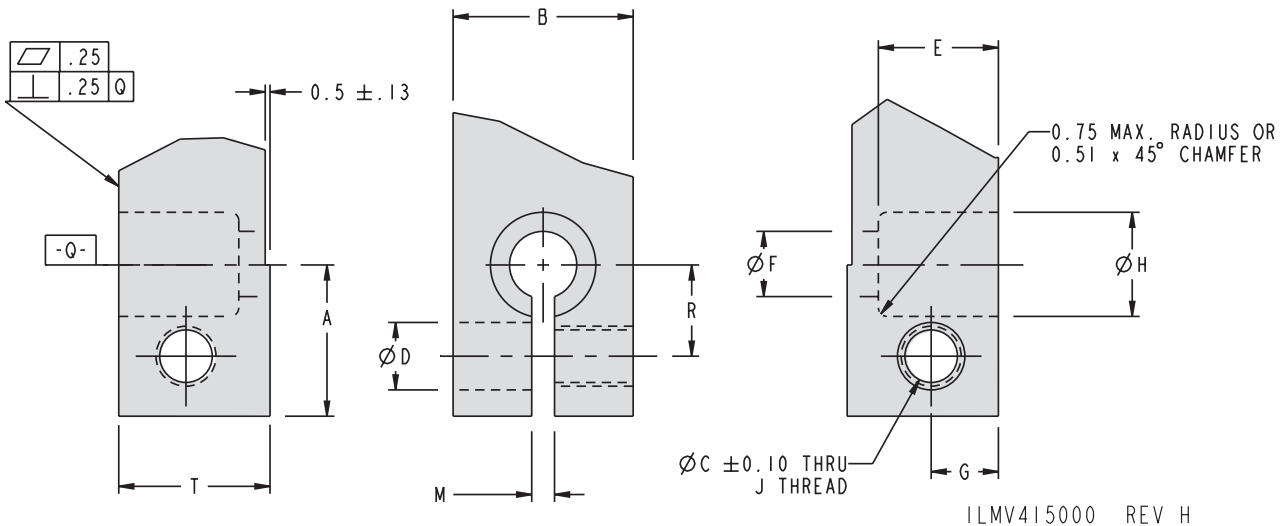
All dimensions are in mm.

0-4



Swing Clamp Arms

Recommended Machine Dimensions for Customer-produced Standard Swing Clamp Arms



End user must add tapped hole to arm in proper location/orientation for their application.

See arm clocking details on page C-29 for locating arm clocking feature tapped holes.

Customer Produced Arm Dimensions

Arm Series	Capacity (kN)	A	B	C	D	E	F	G	H	J	M	R	T
Recommended Machining Dimensions for Custom-Made Clamp Arms (mm)													
44-1011-00	2	16.00	19	5	6.4	12.7	7	7	11.151	M6 x 1.00-6H	2.4	9.52	16
44-1111-00													
44-1211-00													
44-1411-00													
44-1015-00	4.9	19.05	25.5	6.8	8.5	18.03	11	7.8	15.913	M8 x 1.25-6H	2.9	12.7	22
44-1115-00													
44-1215-00													
44-1415-00													
44-1022-00	11.6	26.16	35	8.8	10.5	25.4	13.5	9.4	22.263	M10 x 1.25-6H	2.9	16.67	32
44-1122-00													
44-1222-00													
44-1422-00													
44-1031-01	22	38.10	51	14.5	16.5	36.5	17	12.7	31.775	M16 x 1.5-6H	2.9	24.61	44.5
44-1131-01													
44-1231-01													
44-1431-01													

NOTE: Follow arm length limitations on page O-3

All dimensions are in mm.