

VersaCam™ Swing Clamps

Threaded Body Specifications

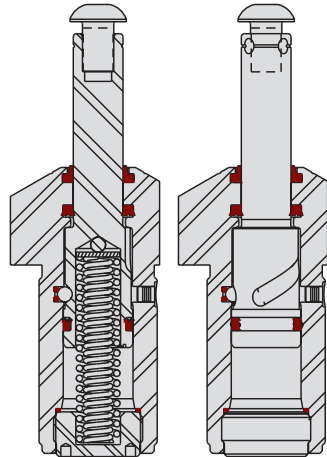
Single And Double Acting

- Available in four capacities from 2 kN to 22 kN at 350 bar (35 MPa).
- Standard swing is 90°; swing angles less than 90° require Swing Restrictors (Page C-29). Swing angles greater than 90° are special order products.
- To avoid cylinder damage and preserve warranty, use recommended flow rate limits and time calculations on page C-2.
- Arm clacking feature is compatible with all standard Vektek arms.
- Arms sold separately — see Section O.

Porting is all on the top of the cylinder body for easy access (bottom unclamp porting is available), no need to modify fixtures or reroute tubing to access cylinder end to unclamp.

Vent port with bronze filter gives the cylinder a place to "breathe" and helps keep chips from drawing past wipers.

Hardened V-cam tracks resist damage and give you a built in extra cam or straight line option should you accidentally damage one. Specify left, right or straight cam, and we will preset the swing when you order.



SINGLE ACTING DOUBLE ACTING
ILMVI50106 REV G



U.S. Patent Nos.
5,820,118
6,886,820 B1

SWING CLAMP PLUNGER
SHOWN IN THE EXTENDED
LH CAM POSITION

Specifications

Model No.	Swing Direction	Cylinder Capacity* (kN)	Vertical Clamping Stroke** (mm)	Total Stroke (Swing + Vertical) (mm)	Body Thread	Effective Piston Area (cm ²)		Oil Capacity*** (cm ³)	
						Retract	Extend	Retract	Extend
Single Acting (S/A) Cylinders, actuated hydraulically 1 direction, spring returned.									
41-5002-11	Right	2	6	14.5	M28 x 1.5	0.63	N/A	0.92	
41-5002-12	Left								
41-5002-15	Straight	4.9	8	20	M38 x 1.5	1.90	N/A	3.82	
41-5005-11	Right								
41-5005-12	Left	11.6	13	29.5	M48 x 1.5	4.04	N/A	11.9	
41-5005-15	Straight								
41-5011-11	Right	22	16	42	M65 x 1.5	7.60	N/A	32	
41-5011-12	Left								
41-5011-15	Straight								
41-5022-11	Right								
41-5022-12	Left								
41-5022-15	Straight								
Double Acting (D/A) Cylinders, actuated hydraulically both directions.									
41-5002-21	Right	2	6	14.5	M28 x 1.5	0.63	2.3	0.92	
41-5002-22	Left								
41-5002-25	Straight	4.9	8	20	M38 x 1.5	1.90	7.8	3.82	
41-5005-21	Right								
41-5005-22	Left	11.6	13	29.5	M48 x 1.5	4.04	23	11.9	
41-5005-25	Straight								
41-5011-21	Right	22	16	42	M65 x 1.5	7.60	65.4	32	
41-5011-22	Left								
41-5011-25	Straight								
41-5022-21	Right								
41-5022-22	Left								
41-5022-25	Straight								

WARNING! Never allow swing arm to contact workpiece or fixture during arm rotation.

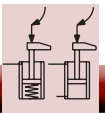
* Cylinder capacities are listed at 350 bar (35 MPa) maximum operating pressure, with a standard length VektorFlo® arm installed. Minimum operating pressure is 52 bar (5.2 MPa) for single acting, 35 bar (3.5 MPa) for double acting. The clamping force is adjustable by varying the hydraulic system pressure. To determine the approximate output force for your application, divide the cylinder capacity shown above by 350 (35), and multiply the resultant number by your system operating pressure to obtain the approximate clamping force for your application. (Actual force will vary slightly due to internal cantilever loading, friction loss and/or return springs.)

** To allow for workpiece height variations, it is recommended that the vertical travel be set to about 50% of the vertical stroke.

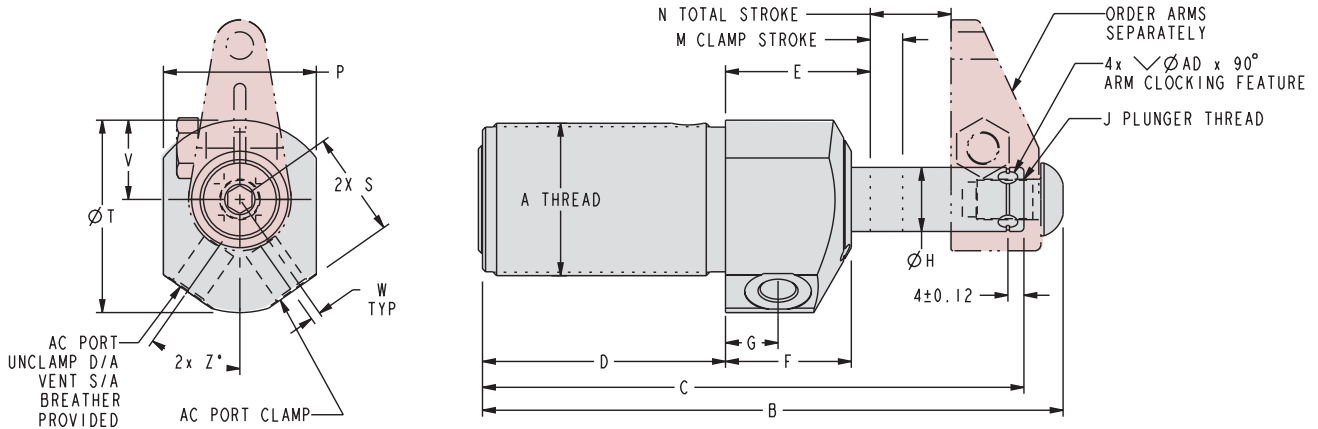
*** To ensure maximum service life and trouble-free operation, restrict fluid flow per table on page C-20.



VersaCam™ Swing Clamps



Threaded Body Dimensions



Swing Clamp Plunger shown in the Extended LH Cam Position. ILMV150107 REV G

C-22

Dimensions

Model No.	A	B	C	D	E	F	G	H	J	M	N	P	S	T	V	W	Z	AC	AD
Single Acting (S/A) Cylinders, actuated hydraulically 1 direction, spring returned.																			
41-5002-11	M28 x 1.5	108	102	44	30.5	25.5	13	11.13	M6 x 1 x 7	6	14.5	32	20.5	38	14	2.00	25	G 1/8	3.2
41-5002-12																			
41-5002-15																			
41-5005-11	M38 x 1.5	143	134	60	36	31	13	15.88	M10 x 1.5 x 12	8	20	38	26	47.5	19.5	2.41	35	G 1/8	4.8
41-5005-12																			
41-5005-15																			
41-5011-11	M48 x 1.5	185	172	79	38	32	13	22.23	M12 x 1.75 x 13	13	29.5	47.5	31.5	60	25.5	2.22	30	G 1/4	4.8
41-5011-12																			
41-5011-15																			
41-5022-11	M65 x 1.5	252	236	115.5	42	34	13	31.71	M16 x 2 x 19	16	42	65	37	73	33	1.27	30	G 1/4	4.8
41-5022-12																			
41-5022-15																			
Double Acting (D/A) Cylinders, actuated hydraulically both directions.																			
41-5002-21	M28 x 1.5	108	102	44	30.5	25.5	13	11.13	M6 x 1 x 7	6	14.5	32	20.5	38	14	2.00	25	G 1/8	3.2
41-5002-22																			
41-5002-25																			
41-5005-21	M38 x 1.5	143	134	60	36	31	13	15.88	M10 x 1.5 x 12	8	20	38	26	47.5	19.5	2.41	35	G 1/8	4.8
41-5005-22																			
41-5005-25																			
41-5011-21	M48 x 1.5	185	172	79	38	32	13	22.23	M12 x 1.75 x 13	13	29.5	47.5	31.5	60	25.5	2.22	30	G 1/4	4.8
41-5011-22																			
41-5011-25																			
41-5022-21	M65 x 1.5	252	236	115.5	42	34	13	31.71	M16 x 2 x 19	16	42	65	37	73	33	1.27	30	G 1/4	4.8
41-5022-22																			
41-5022-25																			

NOTE: Follow arm length limitations on page O-3

All dimensions are in mm.

Order Arms Separately.