

Special Use Clamps

Air Powered Collet Vise Specifications

Double Acting

- Single collet styles only.
- Compact design yields (downward) 750 lb. collet closing force generated at 100 psig air pressure.
- Concentric piston pulls the standard 5-C collet on center line.
- Available with or without mounting flange for easy fastening from either top or bottom.
- Through-hole design allows you to feed bar stock (1.062" maximum diameter) from the bottom of the collet for high production applications.
- Lightweight, only 5 lbs.

Specifications

Double Acting Collet Closer - Pneu. Clamped & Unclamped

Model Number	Base Style	Approx. Radial Clamping Force* (lb)	Approx. Axial Clamping Force* (lb)	Approx. Weight (lb)
P1-5005-00	Square	2250	750	4.5
P1-5005-01	Flanged			5.0

*At 100 psi air pressure with a $\varnothing .500$ collet
Do not exceed 150 psi inlet pressure.

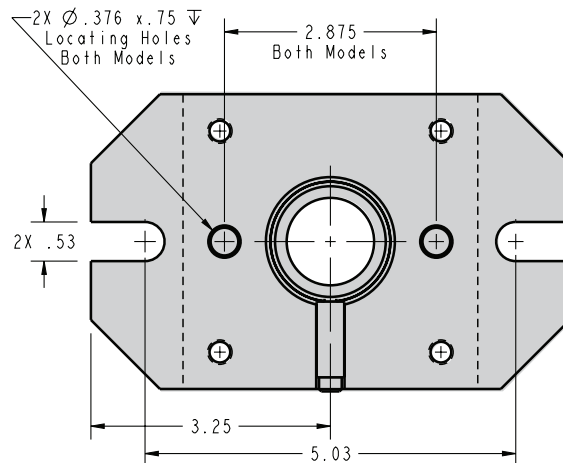
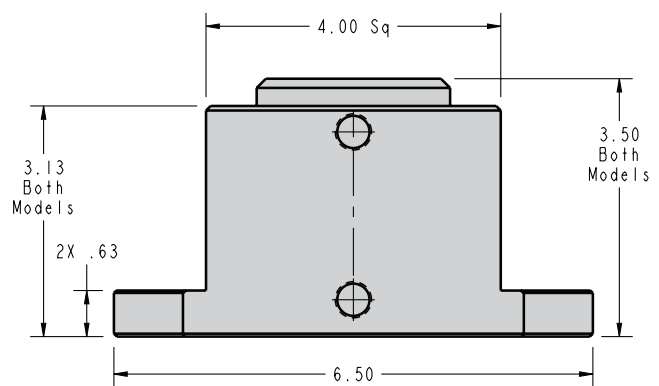
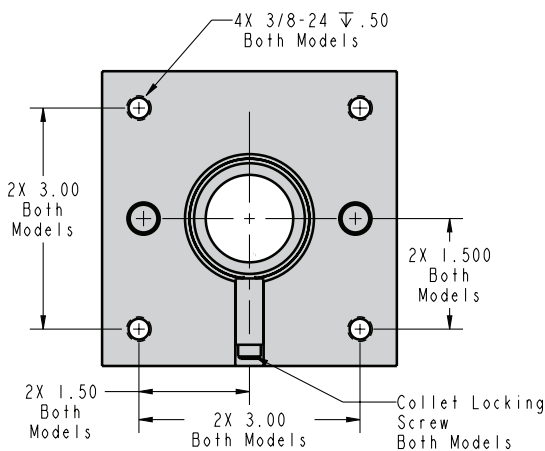
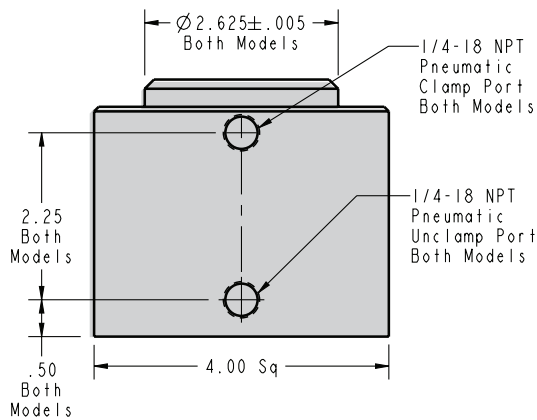
Operating temperature limits are 32-150° F



Model: P1-5005-00



Model: P1-5005-01



ILSP15500 REV E

800-992-0236

© Vektex LLC, July 2017