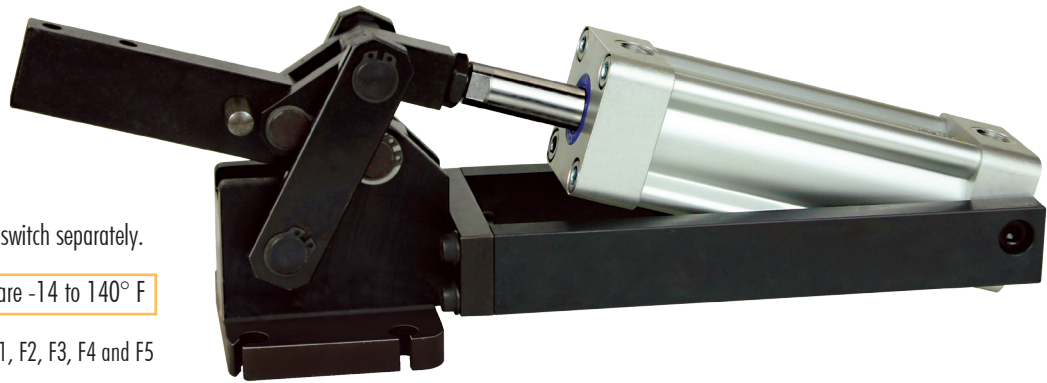


# Toggles

Horizontal, Heavy Duty

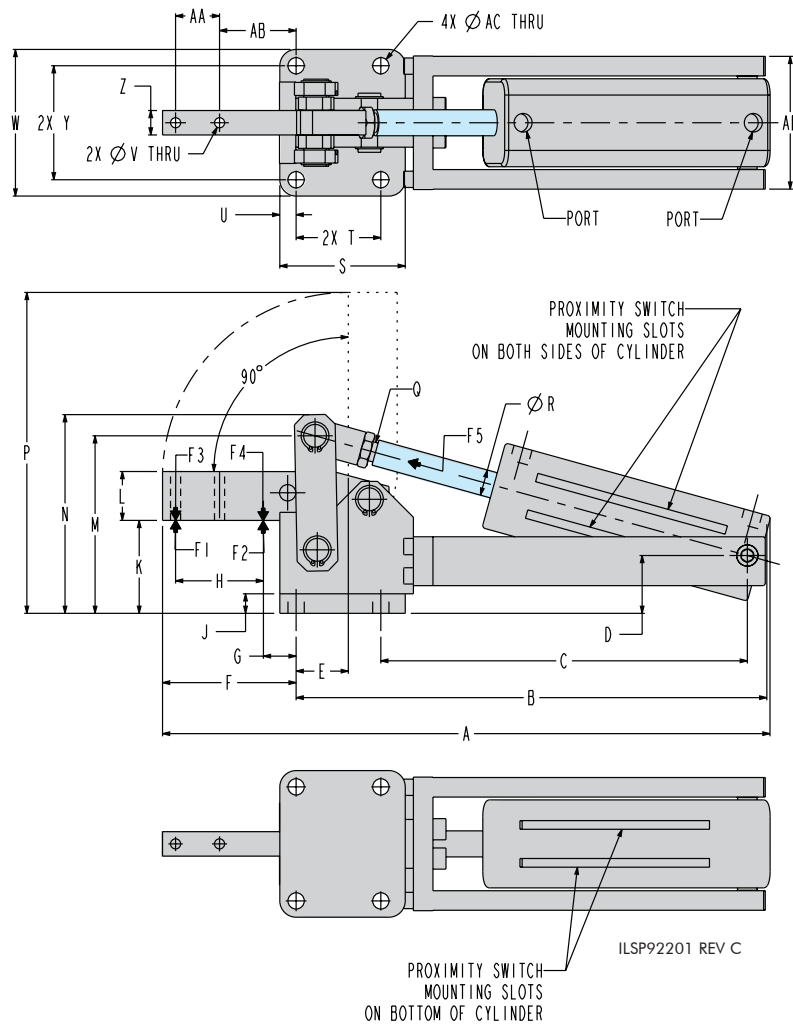


■ Proximity switch capable, order switch separately.

Operating temperature limits are -14 to 140° F

See page G-1 for explanation of F1, F2, F3, F4 and F5

G-2



Proximity Switch  
P6-2297-00 (PNP)  
P6-2297-01 (NPN)

Dimensions			
Model Number	P9-2205	P9-2213	P9-2221
Size	4	6	8
Weight lbs.	9.8	16.5	37.8
F1 lbs.*	1349	2698	4496
F2 lbs.*	2023	4047	6744
F3 lbs.*	337	562	899
F4 lbs.*	495	787	1349
F5 lbs.*	169	225	405
Vn**	1.0	1.8	4.3
a	14.96	17.13	21.26
b	11.73	13.58	16.24
c	10.91	12.40	15.08
d	1.40	1.57	2.13
e	1.26	1.18	1.65
f	3.23	3.54	5.02
g	.79	.93	.87
h	2.13	2.36	3.74
i	.47	.47	.47
k	2.24	2.40	3.39
l	1.18	1.57	2.36
m	4.29	5.08	6.93
n	4.80	5.79	7.72
p	7.68	8.66	12.20
q	M12 x 1.25	M16 x 1.50	M16 x 1.50
r	.63	.63	.79
s	3.23	3.54	4.72
t	2.05	2.17	3.15
u	.39	.43	.49
v	.24	.32	.52
w	3.54	4.13	5.31
y	2.76	3.27	4.37
z	.59	.79	1.18
AA	1.06	1.02	1.57
AB	1.85	2.07	2.74
AC	.43	.43	.51
AD	3.23	3.98	4.84
Cylinder			
Stroke	3.15	3.94	4.72
Piston Dia.	1.57	1.97	2.48
Port	G1/4	G1/4	G1/4

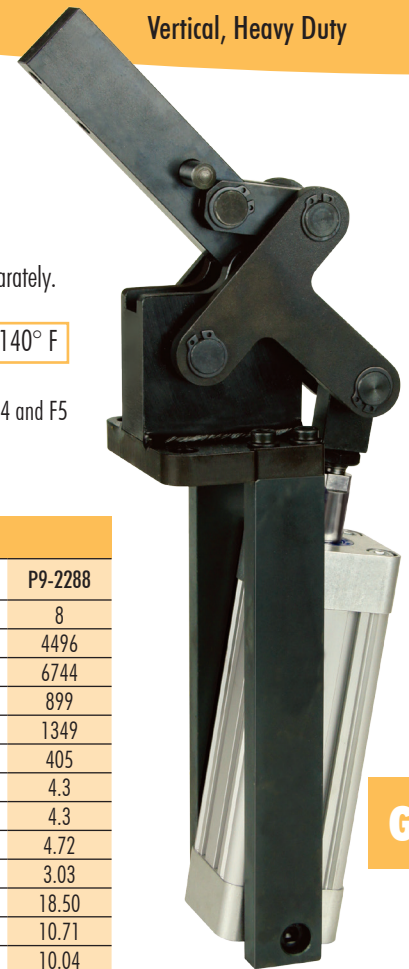
\* Holding capacity at maximum input pressure of 145 psig.  
\*\* Vn = Air consumption in cu. in. per double stroke at 85 psig.

800-992-0236

© Vektex LLC, July 2017

# Toggles

Vertical, Heavy Duty

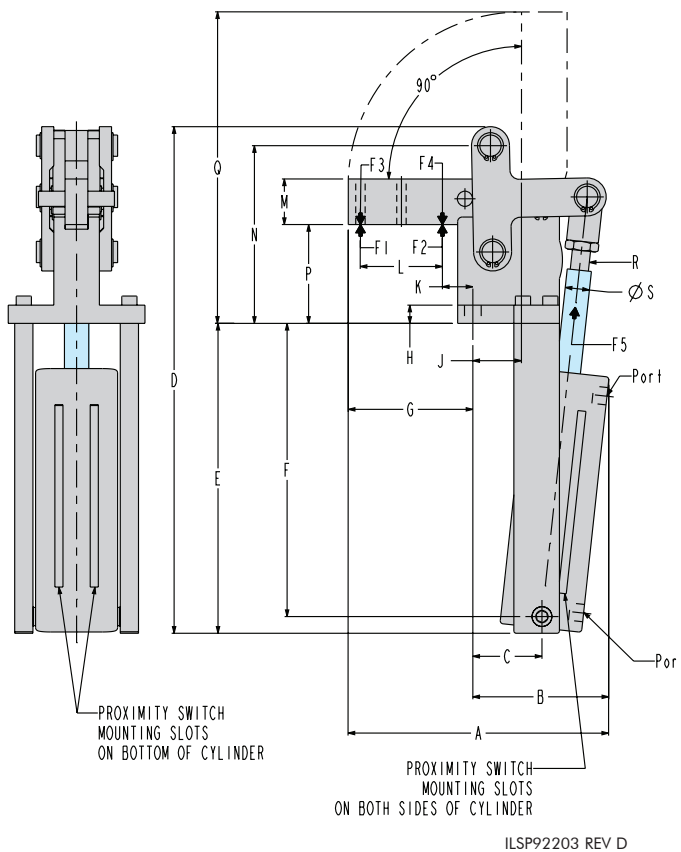
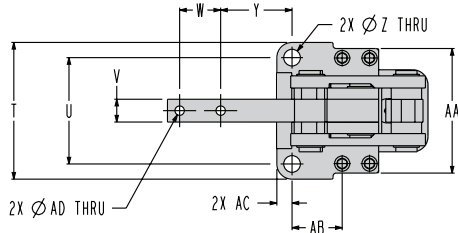


G-3

■ Proximity switch capable, order switch separately.

Operating temperature limits are -14 to 140° F

See page G-1 for explanation of F1, F2, F3, F4 and F5



Proximity Switch  
P6-2297-00 (PNP)  
P6-2297-01 (NPN)

## Dimensions

Model Number	P9-2262	P9-2270	P9-2288
Size	4	6	8
F1 lbs.*	1349	2698	4496
F2 lbs.*	2023	4047	6744
F3 lbs.*	337	562	899
F4 lbs.*	495	787	1349
F5 lbs.*	169	225	405
Vn**	1.0	1.8	4.3
a	6.77	7.68	4.3
b	2.99	3.46	4.72
c	1.81	1.89	3.03
d	13.39	15.20	18.50
e	8.03	9.21	10.71
f	7.60	8.70	10.04
g	3.23	3.54	4.92
h	.47	.59	.79
j	1.26	1.14	1.77
k	.79	.87	.96
l	2.13	2.36	3.74
m	1.18	1.57	2.36
n	4.61	5.39	7.24
p	2.56	2.72	3.70
q	8.11	8.90	12.68
r	M12 x 1.25	M16 x 1.50	M16 x 1.50
s	.63	.63	.79
t	3.54	4.13	5.71
u	2.76	3.27	4.53
v	.59	.79	1.18
w	1.06	1.02	1.57
y	1.85	2.13	2.64
z	.43	.51	.67
AA	3.54	3.94	4.84
AB	1.30	1.16	1.73
AC	.39	.47	.59
AD	.24	.32	.52
Cylinder			
Stroke	2.91	3.43	4.72
Piston Dia.	1.57	1.97	2.48
Port	G1/4	G1/4	G1/4

\* Holding capacity at maximum input pressure of 145 psig.

\*\* Vn = Air consumption per double stroke in cu. in. at 85 psig.

800-992-0236

© Vektek LLC, July 2017