

Intensifier and Accessories

Dimensions/Specifications

Pneumatic Intensifier Features

- Increases clamping forces by increasing shop air. This eliminates the need for high pressure compressors or the need to utilize hydraulic systems for low to medium clamp forces.
- The VektorAir™ intensifier has a built in adjustable regulator to easily allow for precise adjustment of clamp force.
- Designed specifically for clamping applications, our intensifier has an exclusive feature that uses standard shop air to advance the clamps. Then, the intensifier engages, building pressure to the predetermined setting. This decreases cycle time to clamp and lengthens the life of the intensifier.
- Valve mounting is simplified with the inclusion of an ISO 1 mounting pad.
- The intensifier will automatically start cycling if there is a loss of pressure during the clamp cycle. Cycling will continue until the pressure loss is eliminated.

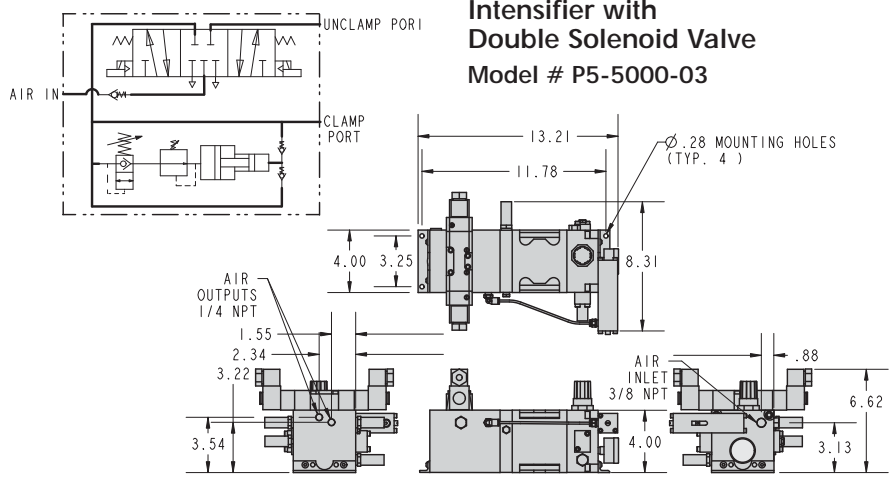
E-1

4:1 Pneumatic Intensifier

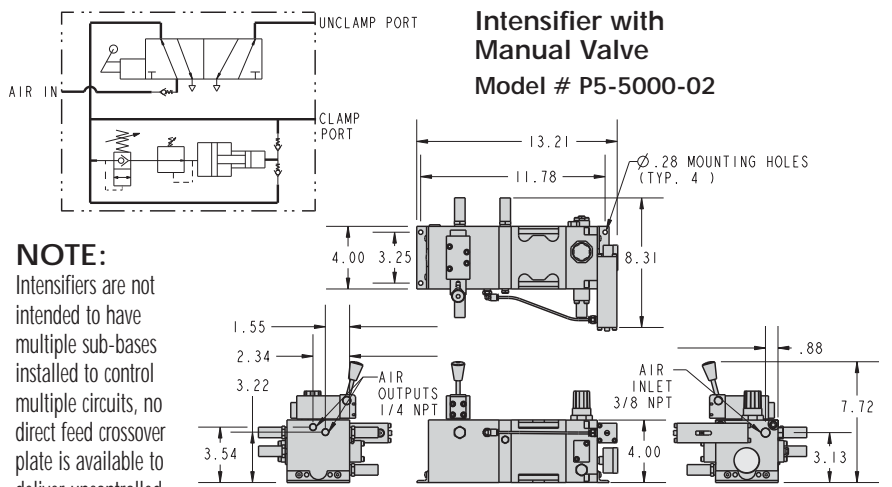
Model Number and Description

P5-5000-03 with Double Solenoid, 5/3 Control Valve
P5-5000-02 with Manual, 2/4 Control Valve

NOTE: 60/65 psig MAX. Input Vekttek pneumatic devices are rated at 250 psig or less. This intensifier will produce pressure greater than 250 psig. CAUTION should be used to prevent damage to devices.



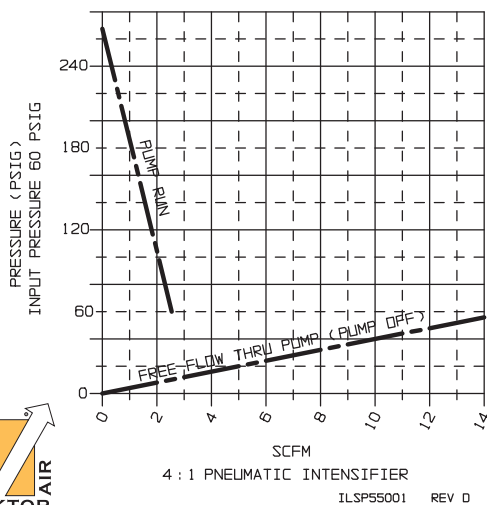
P5-5000-03, 4:1 PNEUMATIC INTENSIFIER SUPPLIED WITH 250 PSI, 110VAC, DOUBLE SOLENOID, 5/3 CONTROL BLOCK, ISO 1, CONTROL VALVE (PN: P7-1021-00) ILSP5003 REV A



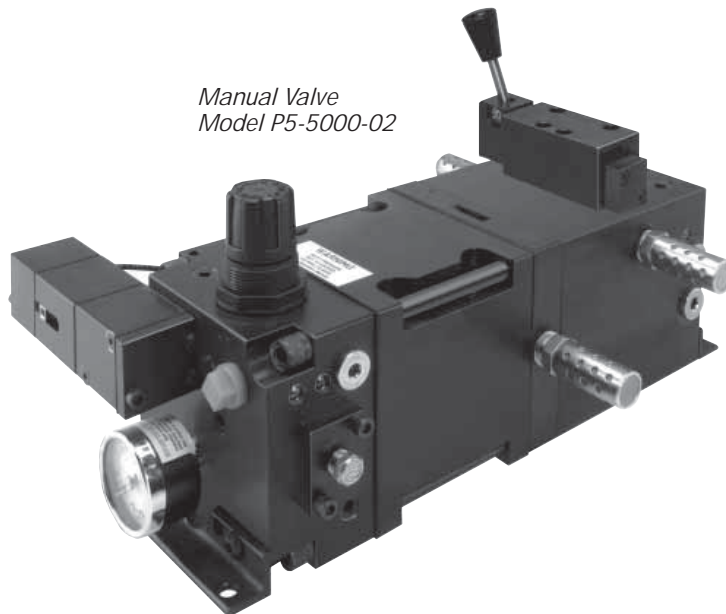
NOTE:

Intensifiers are not intended to have multiple sub-bases installed to control multiple circuits, no direct feed crossover plate is available to deliver uncontrolled high air pressure.

P5-5000-02, 4:1 PNEUMATIC INTENSIFIER SUPPLIED WITH MANUAL 2/4 CONTROL VALVE (PN:P7-1030-00) ILSP5002 REV A



Manual Valve
Model P5-5000-02



800-992-0236

© Vekttek, Inc November 2009