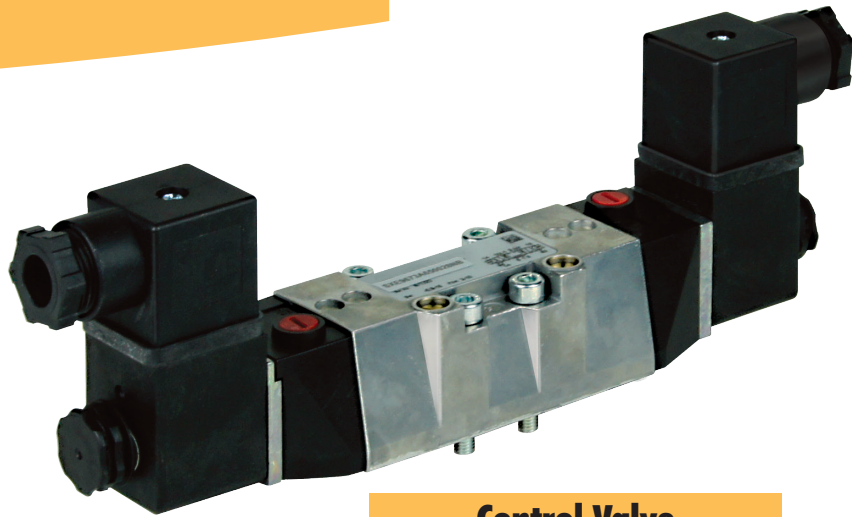


Valves

For Double Acting Systems

Control valves: 5 port, 3 position ISO 1

- These valves are designed to control double acting pneumatic clamping systems.
- Valves can run on lubricated or unlubricated air. Cylinder exhaust is controlled by internal flow controls, allowing individual exhausts to be controlled with only one common exhaust in the end plate.
- If electrical power is lost, manual overrides allow the valves to be shifted. Overrides can also be used to help in system troubleshooting.
- Rapid return is achieved when the valve is deactivated, since the exhaust orifice is oversized.
- Installing the valves is aided by captive mounting parts, eliminating lost screws and seals during assembly/disassembly.
- Installation is made easier since the coil can be rotated in 90° increments and the grip connector moves 180°.
- Connections are made easily with our push-to-connect tubing. It functions with Nylon 11 tubing for inch sizes and Nylon 12 tubing for metric sizes. Standard NPT ports are used in the manifolds.
- Valve bodies are made of die-cast aluminum.



Control Valve

Model Number and Specifications

P7-1021-00

ISO 1 - 5/3 CENTER BLOCKED
115V AC • 250 PSIG

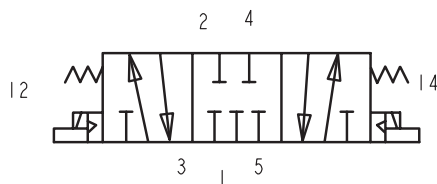
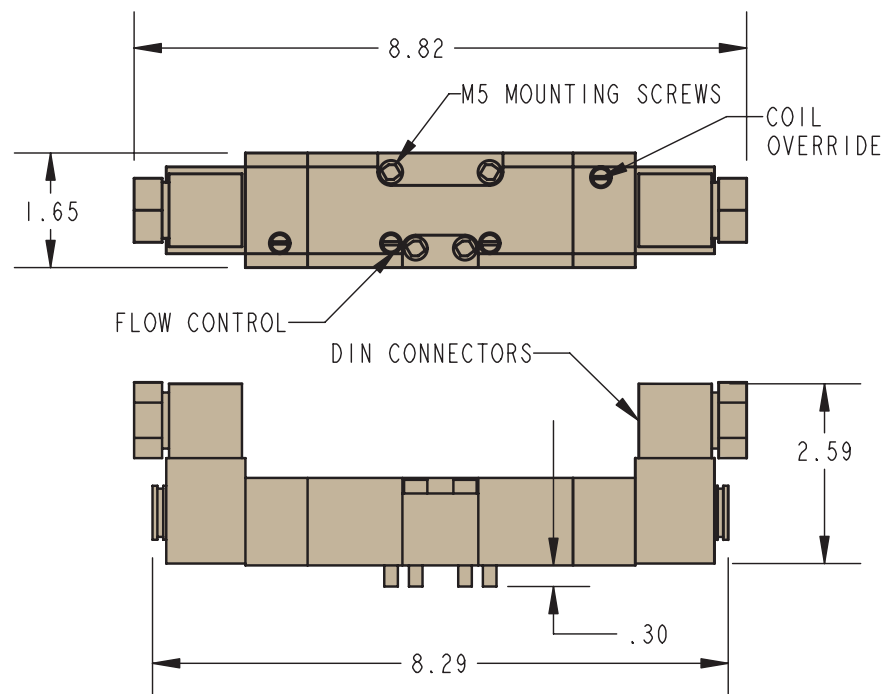
Must use external pilot pressure - not to exceed 150 PSIG

P7-1021-01

ISO 1 - 5/3 CENTER BLOCKED
115V AC • 150 PSIG

External pilot NOT required

F-3



ILSP71001 REV C

Specification

Standard Power Requirements	Seals	Ambient Temperature Range	Inlet Temperature	Response Time On/Off	Duty Rating	Override	Electrical Interface
120V/60Hz	Nitrile Viton®	5° to 120° F	23° to 175° F	20/34 msec ± 20%	Continuous at 90% to 105% of rated voltage	Manual, Locking/Non-locking	3 pin Plug In Din Connect

800-992-0236

© Vektak LLC, July 2017