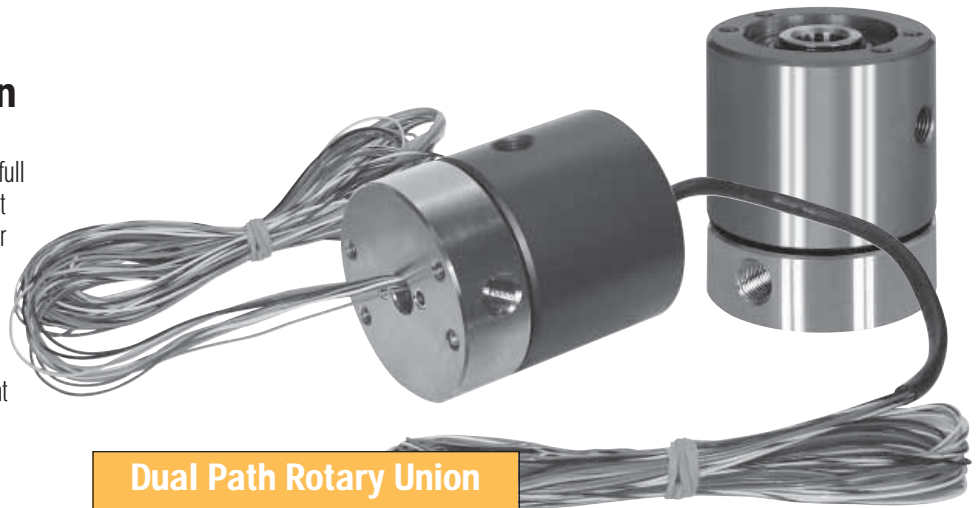


# Miscellaneous Plumbing

## Rotary Union

### Dual Path Rotary Union

- Rotating unions are a rotary connection, feeding pressure to fixtures while allowing full 360° rotation of the fixture with or without pressure. A machine or independent indexer may do this indexing.
- Feature aluminum construction for low weight and excellent durability.
- Dual precision sealed bearings for consistent performance and long seal life.
- Larger units are available upon request.

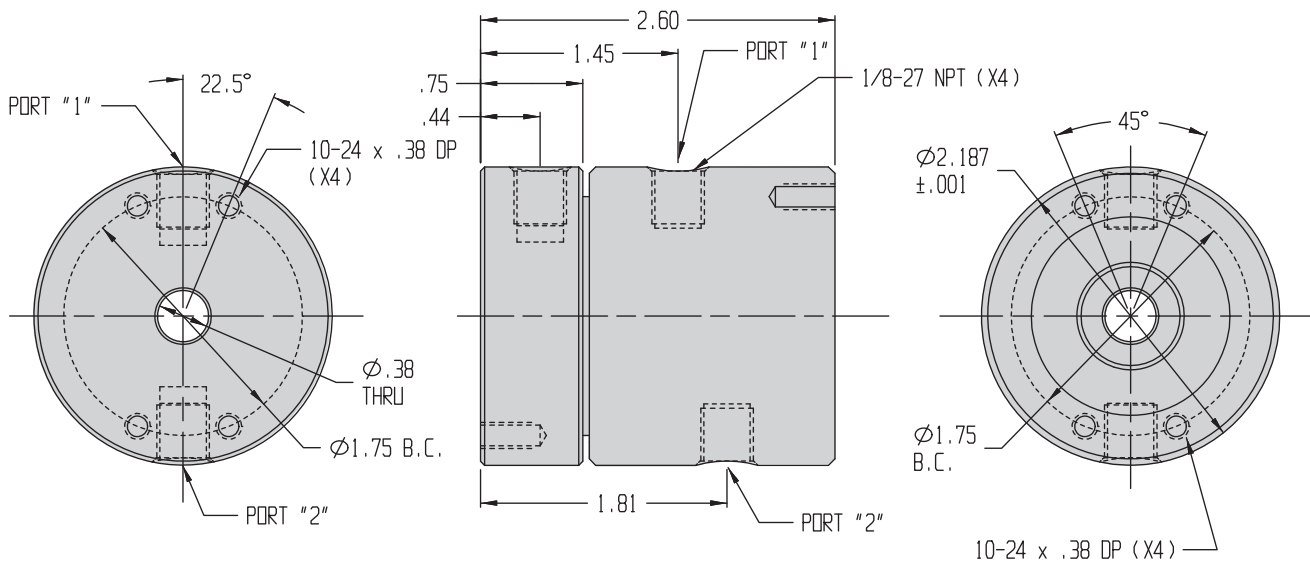


### Operating Parameters

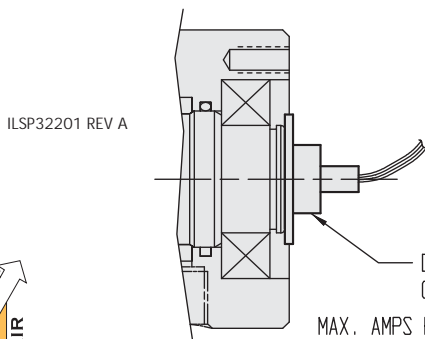
- Max Pressure: 200 psig
- Max. Rotational Speed: up to 100 RPM

F-4

Dual Path Rotary Union	
Model Number	P3-2242-01
	P3-2242-01-ES6A WITH OPTIONAL 6 CIRCUIT SLIP RING
	P3-2242-01-ES12A WITH OPTIONAL 12 CIRCUIT SLIP RING

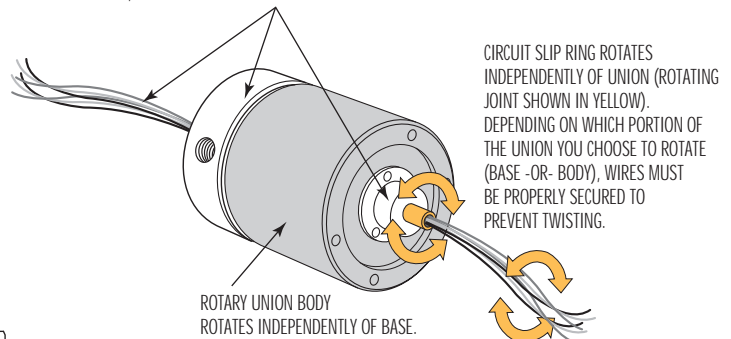


P3-2242-01 ROTARY UNION



OPTIONAL 6 OR 12 CIRCUIT SLIP RING  
 MAX. AMPS PER CIRCUIT: 2  
 MAX. VOLTS PER CIRCUIT: 120  
 LEAD WIRE LENGTH FROM SLIP RING: 24"

ROTARY UNION BASE, WIRES FROM BASE AND CENTER CORE MAINTAIN THE SAME POSITION



800-992-0236

## Quad Path Rotary Union

- Rotating unions are a rotary connection, feeding pressure to fixtures while allowing full 360° rotation of the fixture with or without pressure. A machine or independent indexer may do this indexing.
- Feature aluminum construction for low weight and excellent durability.
- Dual precision sealed bearings for consistent performance and long seal life.
- Larger units are available upon request.

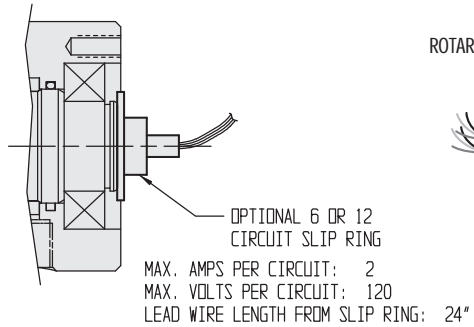
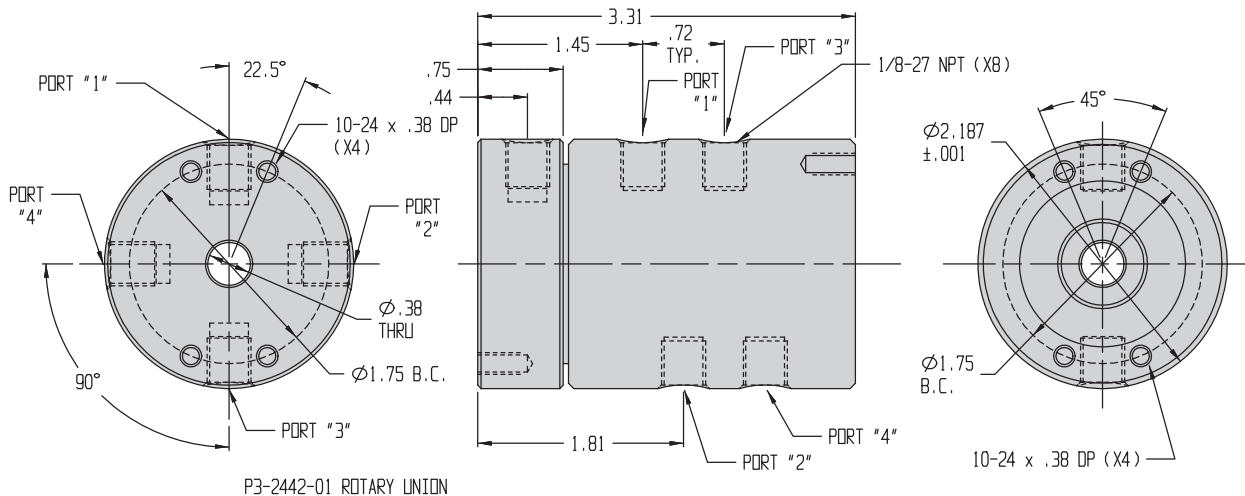


### Operating Parameters

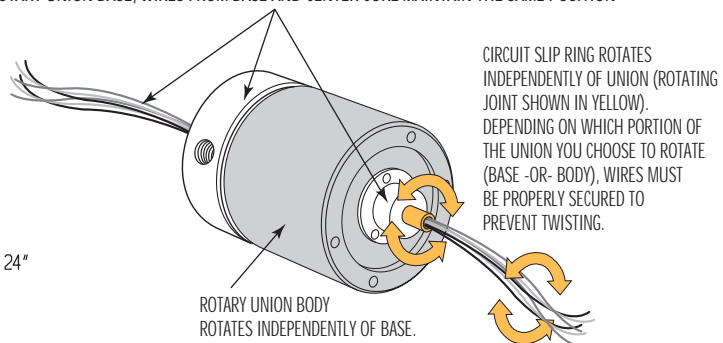
- Max Pressure: 200 psig
- Max. Rotational Speed: up to 100 RPM

Quad Path Rotary Union	
Model Number	P3-2442-01
	P3-2442-01-ES6A WITH OPTIONAL 6 CIRCUIT SLIP RING
	P3-2442-01-ES12A WITH OPTIONAL 12 CIRCUIT SLIP RING

F-5



ROTARY UNION BASE, WIRES FROM BASE AND CENTER CORE MAINTAIN THE SAME POSITION



ILSP32202 REV A



800-992-0236

© Vekttek, Inc June 2009