

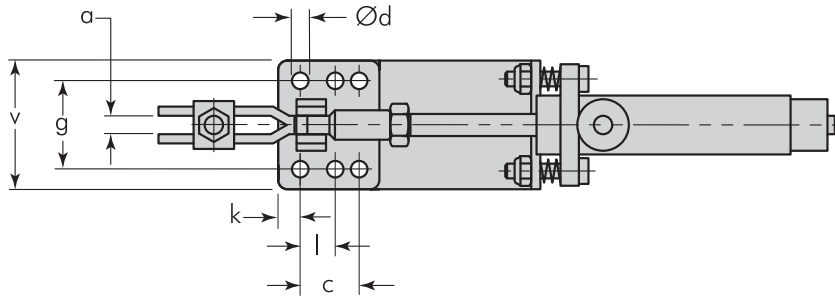
Toggles

Vertical Dimensions

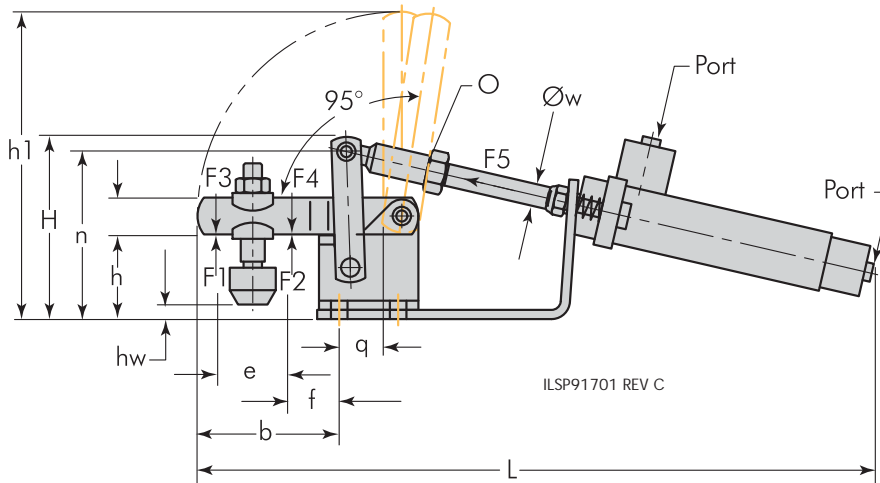


- Includes heat treated, zinc plated clamping screw.

Operating temperature limits are -14 to 140° F



H-4



Dimensions

Model Number	P9-1710	P9-1728	P9-1736
Size	0	1	2
F1 lbs.	112	180	225
F2 lbs.	157	247	270
F3 lbs.	16	29	79
F4 lbs.	20	40	112
F5 lbs.	8.5	13.5	38
Vn*	0.03	0.06	0.17
H	1.77	1.97	2.52
L	6.50	7.32	8.66
Clamping Screw	M4 x 25mm	M5 x 30mm	M6 x 35mm
Weight lbs.	0.3	0.9	1.3
a	0.16	0.20	0.24
b	1.22	1.50	2.01
c	0.53	0.63	0.79
Ød	0.18	0.18	0.21
e	0.63	0.75	1.06
f	0.39	0.55	0.79
g	0.91	0.94	1.06
h	0.79	0.91	1.06
h1	2.76	3.35	4.13
hw	-0.04 to 0.24	-0.08 to 0.20	-0.04 to 0.31
i	0.31	0.39	0.47
k	0.20	0.24	0.24
l	-	-	0.49
n	1.57	1.77	2.20
o	M4	M6	M8
q	.39	.47	.51
v	1.30	1.34	1.73
Øw	0.16	0.24	0.31
Cylinder			
Stroke	1.57	1.57	1.57
Piston Dia.	0.39	0.47	0.79
Port	M6 x 0.75mm	M10 x 1mm	M10 x 1mm

ILSP91700 REV E

Use plastic tubing P3-0015-04 for model number P9-1710
Use plastic tubing P3-0015-05 for model P9-1728 & P9-1736

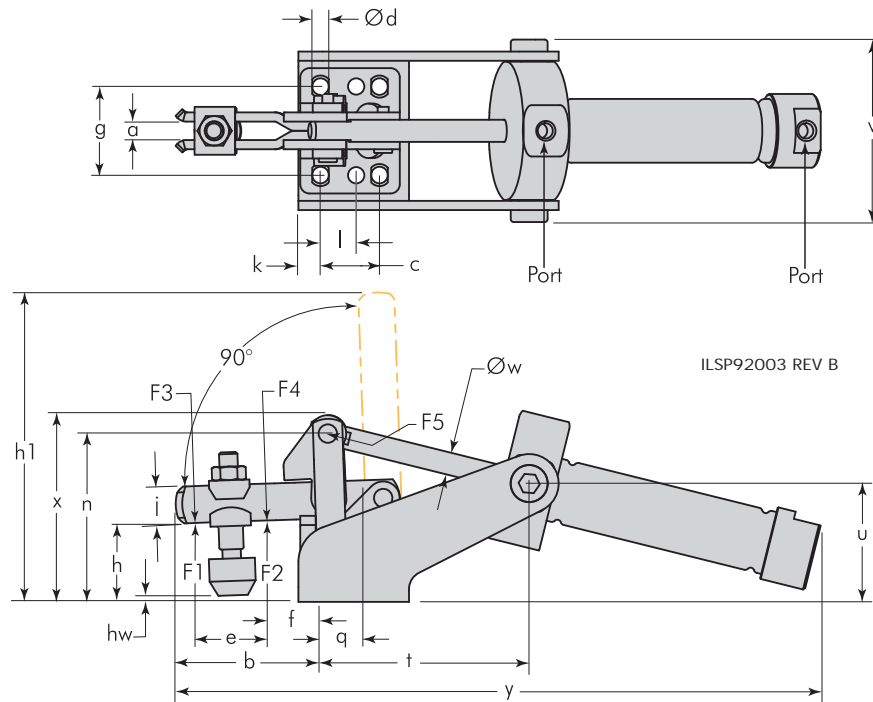
* Vn = Air consumption in cu. in. per double stroke at 85 psig.
Maximum Operating Pressure 116 psig.

See page H-1 for explanation of F1, F2, F3, F4 and F5



800-992-0236

© Vektor, Inc January 2011



Dimensions

Model Number	P9-2015	P9-2023	P9-2031	P9-2049
F1 lbs.	180	225	315	450
F2 lbs.	247	270	562	674
F3 lbs.	45	157	146	337
F4 lbs.	67	225	247	495
F5 lbs.	22	67	112	169
Vn*	0.77	2.15	4.76	8.69
Clamping Screw	M5 x 30mm	M6 x 35mm	M8 x 45mm	M8 x 65mm
a	0.20	0.24	0.31	0.39
b	1.50	2.01	3.15	3.94
c	0.63	0.79	0.79	1.26
Ød	0.18	0.22	0.28	0.33
e	0.75	1.06	1.69	2.05
f	0.55	0.71	1.06	1.38
g	0.94	1.06	1.26	1.77
h	0.87	1.06	1.42	1.77
h1	3.78	4.17	6.18	7.64
hw	-0.08 to 0.20	-0.04 to 0.31	-0.08 to 0.55	-0.20 to 0.94
j	0.39	0.47	0.71	0.79
k	0.24	0.22	0.30	0.31
l	-	0.49	-	-
n	1.85	2.20	2.91	3.43
q	0.47	0.51	0.63	0.87
t	2.28	2.09	2.48	3.39
u	1.26	1.61	2.20	2.52
v	1.97	2.44	2.76	3.31
Øw	0.24	0.39	0.47	0.63
x	2.05	2.60	3.35	3.94
y	6.89	7.87	10.24	12.40
Cylinder				
Stroke	1.34	1.61	2.05	2.44
Piston Dia.	0.63	0.98	1.26	1.57
Port	M5	M5	G1/8	G1/8



H-5

- Includes heat treated, zinc plated clamping screw.
- Proximity switch capable, order switch separately.

Operating temperature limits are -14 to 140° F

FESTO Proximity Switch

Model Number: SME-8-S-LED-24 for P9-2015, P9-2023, P9-2031, or P9-2049

FESTO Mounting Kit

Model Number: SMBR-8-16 for P9-2015
 Model Number: SMBR-8-25 for P9-2023
 Model Number: SMBR-8-32 for P9-2031
 Model Number: SMBR-8-40 for P9-2049

* Vn = Air consumption in cu. in. per double stroke at 85 psig.
 Maximum Operating Pressure 145 psig

See page H-1 for explanation of F1, F2, F3, F4 and F5



800-992-0236

© Vekttek, Inc. January 2011