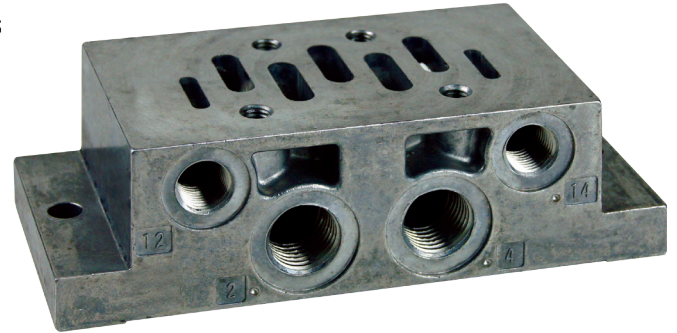


Use with Manual
-OR-
Solenoid Control Valves



Single Valve Sub-base Mounting Plate

Model Number and Specifications

P3-1002-00

USED FOR SINGLE VALVE
ISO 1 MOUNTING

F-4

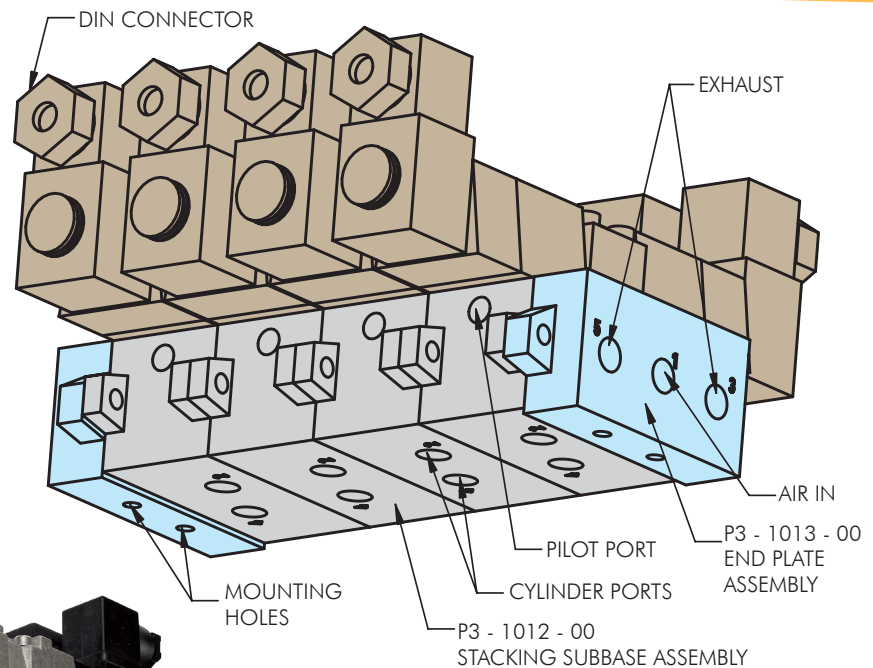
This photo and illustration shows a
**MULTIPLE VALVE
ISO 1 SYSTEM
WITH SOLENOID VALVES**

Assembly Includes:

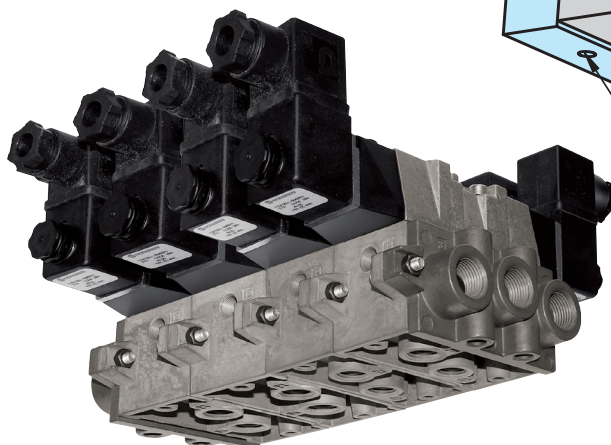
- Control Valve (page F-3)
- Stacking Sub-base (page F-5)
- Stacking End Plates (page F-5)

Configuration Options:

Use Manual Valves -OR- a
combination of Manual and
Solenoid Valves.



ILSP31003 REV B



MAXIMUM 5 VALVES PER STACK

800-992-0236

© Vektak LLC, July 2017

Valves

Pneumatic Confirmation Valve, Block

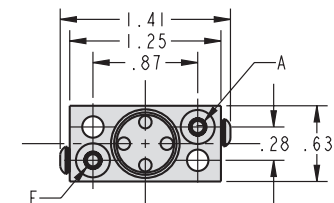
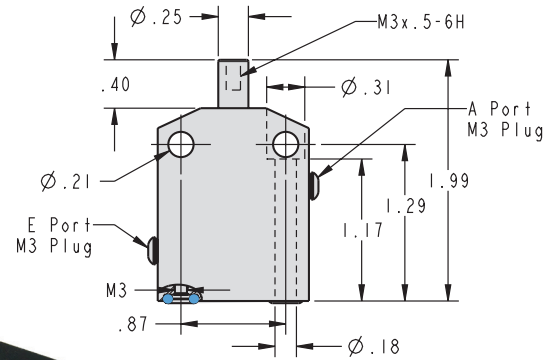
NEW

Confirm Clamp Stroke Position Pneumatically

The pneumatic confirmation valve confirms the stage of loading before or after clamping. It is adaptable to multiple devices including: swing clamps, link clamps, cylinders and supports.

Avoid machine crashes by confirming specific actions before you cycle your machine. It is designed to be used in both coolant and dry environments, and is easily mounted either vertically or horizontally. Confirmation at its finest!

- Easily fine tune your fixture choosing between set and differential pressure.
- Confirm signal is based on restricting air flow when testing function is present.
- Over-travel sensing will reopen if a device depresses plunger beyond the valve limit.
- Use Pneumatic Confirmation Valve with almost any clamping device.
- Assists in detecting missing or incorrectly loaded parts.
- Remote venting recommended in coolant applications.
- Feedback to machine automations and robotics through the pressure switch.
- 1/8 tube - M3 Connector
Part No. P3-0370-20, Order separately.

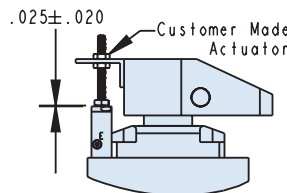


NOTE: Mounting hardware not included.

E= Input

A= Output (vent to atmosphere)

ILS504085 REV E

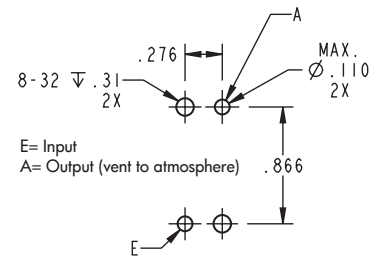


ILS504089 REV C

Application Setup:

Adjust actuator 0.025 ± 0.020 above valve body with clamp positioned at the bottom of clamping stroke.

This will avoid valve and actuator damage if clamp over travels.



E= Input

A= Output (vent to atmosphere)

ILS504086 REV C

For proper sealing, mating surface must be flat within 0.003 in. with a maximum 63 μ in. R_a surface finish.

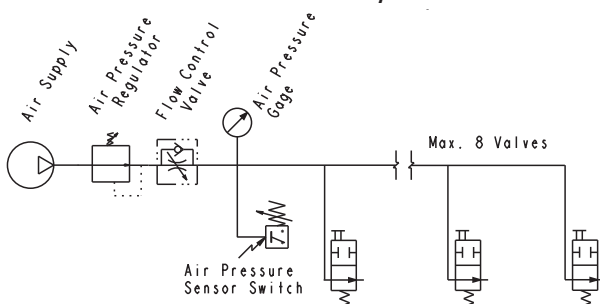
F-5

Pneumatic Confirmation Valve

Model No.	Description	Max Air Pressure (psi)	Operating Pressure Range (psi)	Air Flow Rate (SCFM)	Differential Pressure*		Plunger Stroke (in)	Spring Force (lbf.)	Nominal Diameter (in.)	Port Types
					20 psi System Pressure	70 psi System Pressure				
50-4085-00	Over-Travel Sensing	145	10-70	0.354 - 0.706	Min. 12	Min. 45	0.40 Max	1.5 - 3	0.079	Manifold and M3
50-4085-01	Standard	145	10-70	0.354 - 0.706	Min. 12	Min 45	0.40 Max	1.5 - 3	0.079	Manifold and M3

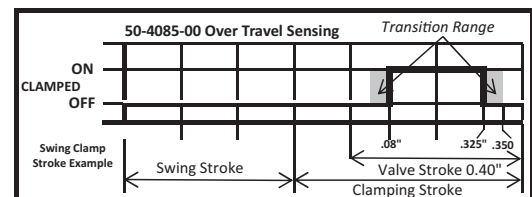
* Pressure drop when one or more valves open. All valves must be closed for pressure confirmation. Plumb multiple valves in parallel.

Pneumatic Pressure Switch Recommended Circuit Layout

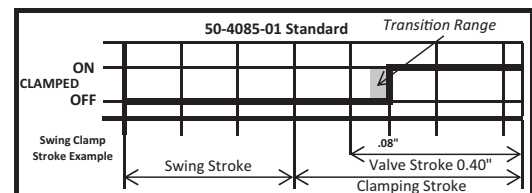


ILS504087 REV A

50-4085-00 Over Travel Sensing Logic



50-4085-01 Standard Logic



ILS504088 REV B

800-992-0236

© Vektek LLC, July 2017