

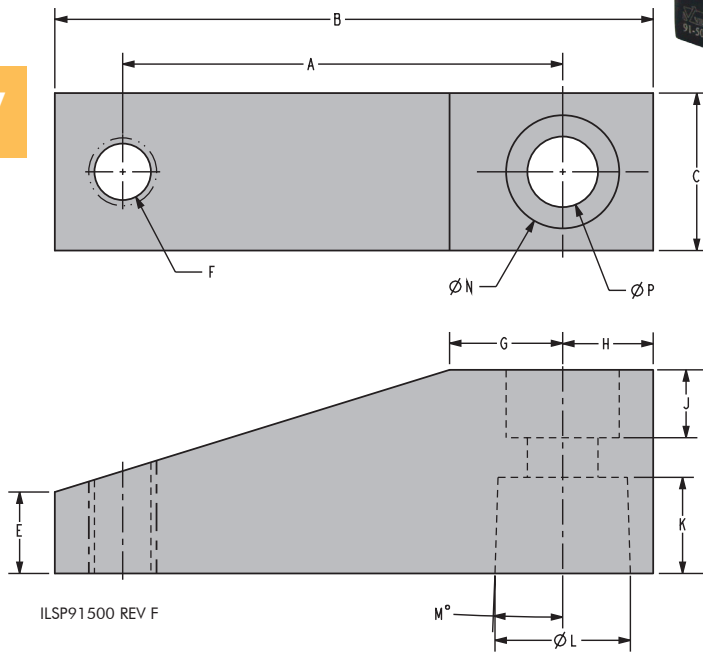
# Swing Clamps

## Arm Specifications

If custom building arms with longer than standard "A" dimension, use the clamp arm performance graphs below to determine the maximum operating pressure of the clamp and available clamp force.



B-7



ILSP91500 REV F

### Dimensions

Model No.	91-5005-03	91-5009-03	91-5015-03	91-5025-03
Model Bore Ø	.50	.875 & 1.125	1.50 & 2.00	2.50
A	1.13	1.50	2.18	2.43
B	1.59	2.19	2.99	3.31
C	.38	.63	.75	.87
D	.50	.69	1.13	1.13
E	.20	.27	.45	.45
F	8 - 32	1/4 - 20	3/8 - 16	3/8 - 16
G	.31	.53	.63	.63
H	.31	.44	.44	.50
J	.16	.31	.38	.38
K	.262	.262	.516	.531
L	Ø .245 ± .002	Ø .492 ± .002	Ø .623 ± .002	Ø .748 ± .002
M	3.5 ± .25	3.5 ± .50	1.8 ± .25	1.8 ± .25
N	.31	.53	.63	.63
P	.180	.344	.390	.390

## Clamp Arm Performance

Arm lengths and pressures operating at or below the curves shown are in the safe operating zones for their corresponding model number. When using extended or large custom arms allow one second minimum for positioning.

ILSP91501 REV A

