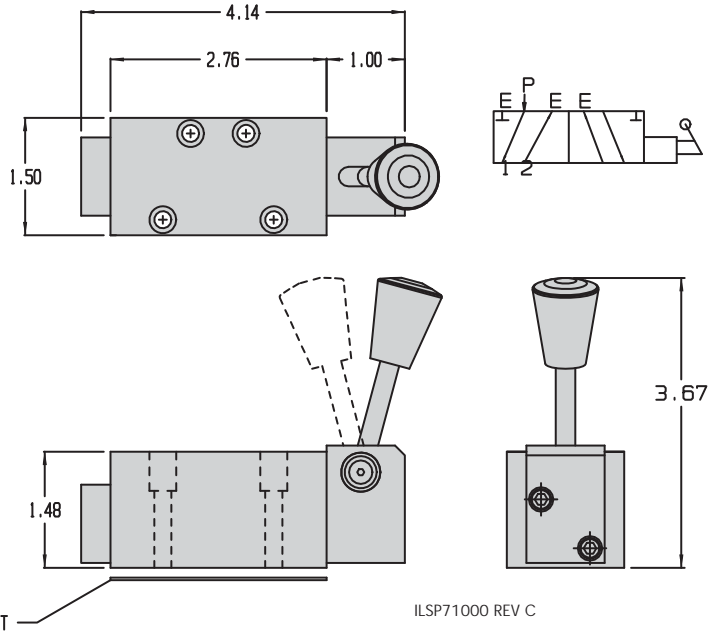


Valves

Manual Valve, Check Valve



5/2 ISO 1, Manual Valve

Model Number and Specifications

P7-1030-00

OPERATING PRESSURE RANGE: 0 - 250 PSIG

CV = .50

SEAL MATERIAL: POLYURETHANE
ISO 1 MOUNTING • 2 POSITION

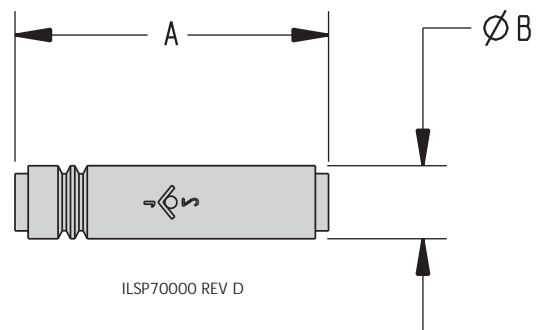
G-1



Push to Connect Check Valve

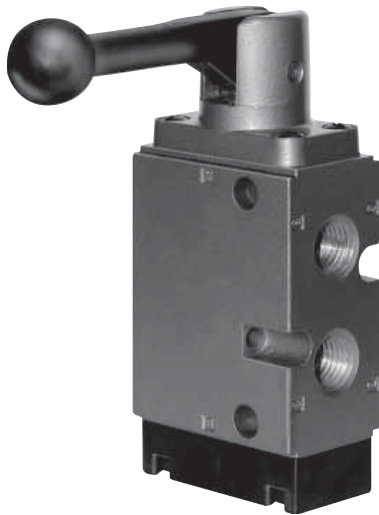
Model Number	P7-0030-00	P7-0030-01
Tubing	1/4	3/8
A	2.19	3.05
B	.51	.79

Maximum working pressure 145 psig.
For nylon tubing only.



800-992-0236

© Vektex, Inc June 2009

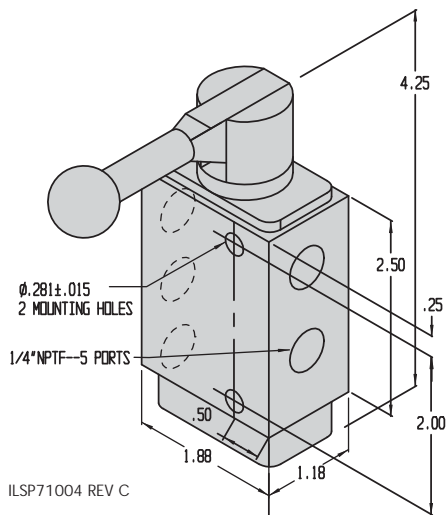
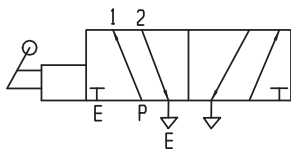


5/2 Manual Valve

Model Number and Specifications

P7-1030-01

OPERATING PRESSURE RANGE: 0 - 150 PSIG
 AMBIENT TEMPERATURE RANGE: 0° - 120° F

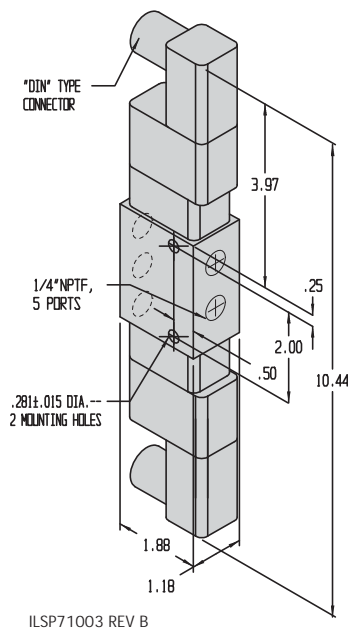
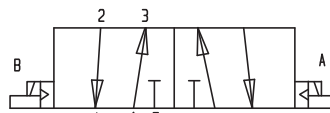


5/2 Double Solenoid Valve

Model Number and Specifications

P7-1021-02 • 120 VAC Double Solenoid Operated

OPERATING PRESSURE RANGE: 25 - 150 PSIG
 AMBIENT TEMPERATURE RANGE: 0° - 120° F



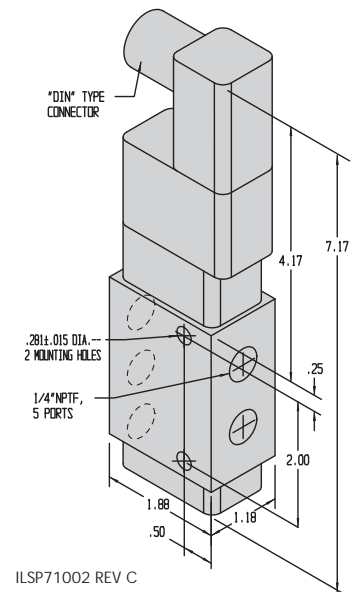
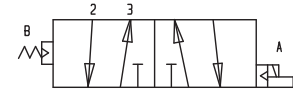
5/2 Single Solenoid Valve

Model Number and Specifications

P7-1011-00 • 120 VAC Solenoid Operated

P7-1012-00 • 24 VDC Solenoid Operated

OPERATING PRESSURE RANGE: 25 - 150 PSIG
 AMBIENT TEMPERATURE RANGE: 0° - 120° F

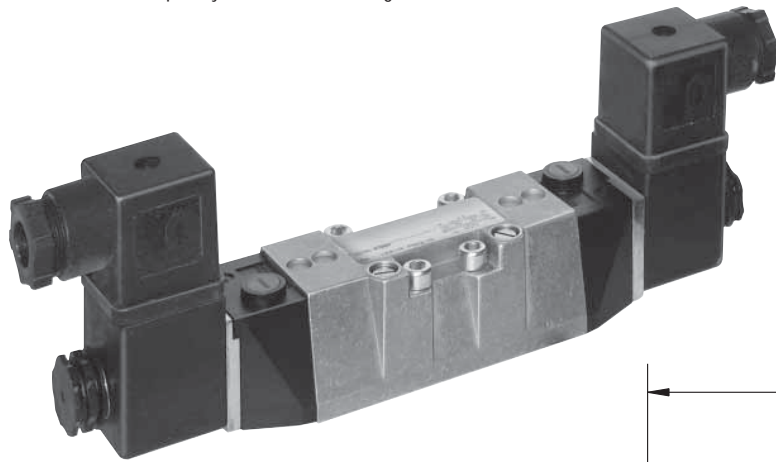


Valves

Valve, 5 Port, 3 Position

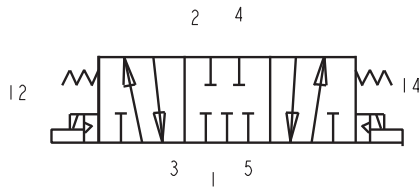
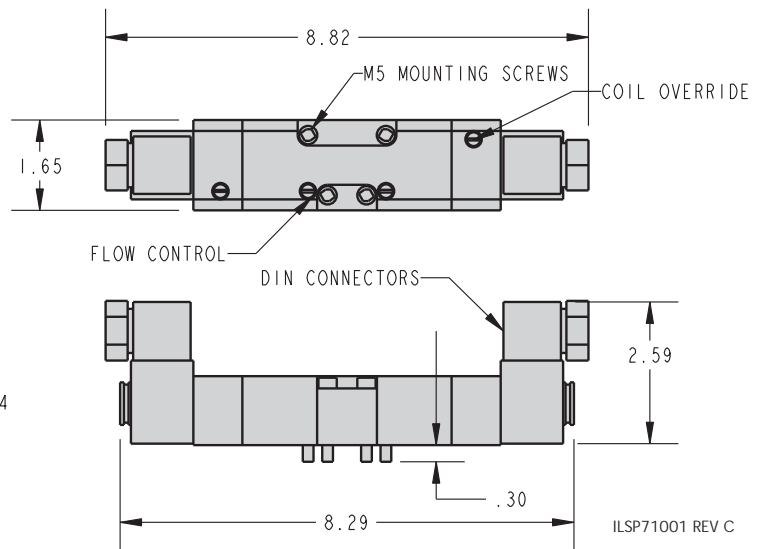
Control valves: 5 port, 3 position ISO 1

- These valves are designed to control double acting pneumatic clamping systems.
- Valves can run on lubricated or unlubricated air. Cylinder exhaust is controlled by internal flow controls, allowing individual exhausts to be controlled with only one common exhaust in the end plate.
- If electrical power is lost, manual overrides allow the valves to be shifted. Overrides can also be used to help in system troubleshooting.
- Rapid return is achieved when the valve is deactivated, since the exhaust orifice is oversized.
- Installing the valves is aided by captive mounting parts, eliminating lost screws and seals during assembly/disassembly.
- Installation is made easier since the coil can be rotated in 90° increments and the grip connector moves 180°.
- Connections are made easily with our push-to-connect tubing. It functions with Nylon 11 tubing for inch sizes and Nylon 12 tubing for metric sizes. Standard NPT ports are used in the manifolds.
- Valve bodies are made of die-cast aluminum.



Control Valve	
Model Number and Description	
P7-1021-00	ISO 1 - 5/3 CENTER BLOCKED 115V AC • 250 PSIG Must use external pilot pressure - not to exceed 150 PSIG
P7-1021-01	ISO 1 - 5/3 CENTER BLOCKED 115V AC • 150 PSIG External pilot NOT required

G-3



Specification

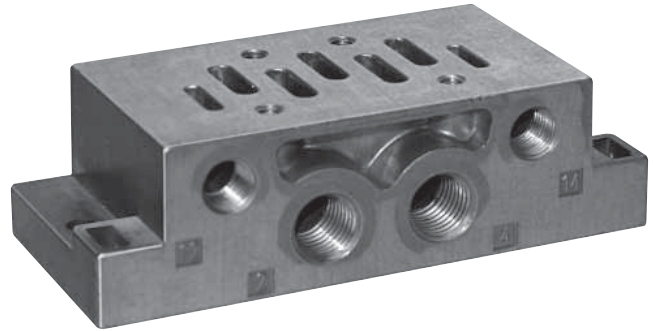
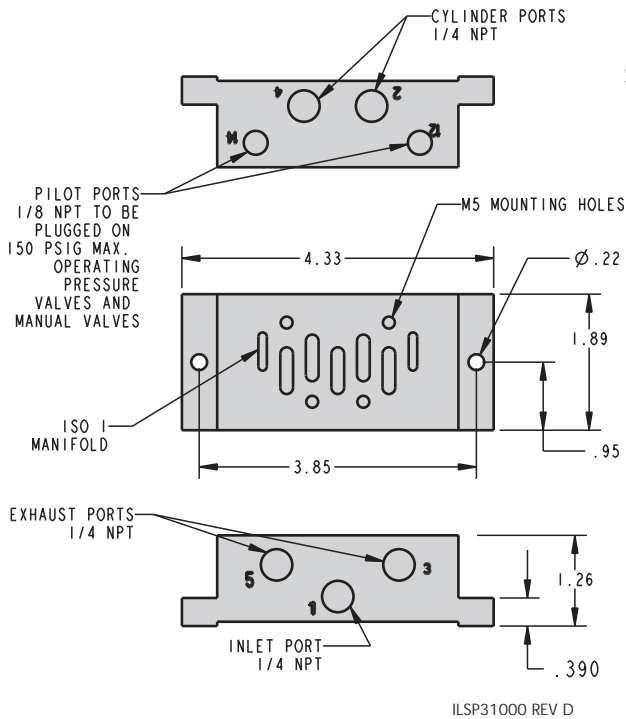
Standard Power Requirements	Seals	Ambient Temperature Range	Inlet Temperature	Response Time On/Off	Duty Rating	Override	Electrical Interface
120V/60Hz	Nitrile Viton®	5° to 120° F	23° to 175° F	20/34 msec ± 20%	Continuous at 90% to 105% of rated voltage	Manual, Locking/Non-locking	3 pin Plug In Din Connect



800-992-0236

© Vektex, Inc June 2009

Use with Manual
-OR-
Solenoid Control Valves



Single Valve Sub-base Mounting Plate

Model Number and Specifications

P3-1002-00

USED FOR SINGLE VALVE
ISO 1 MOUNTING

G-4

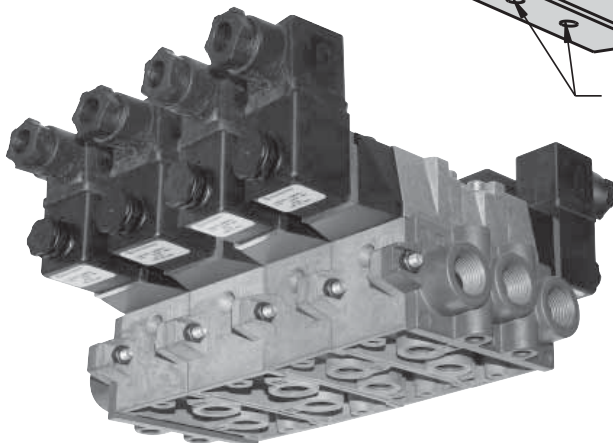
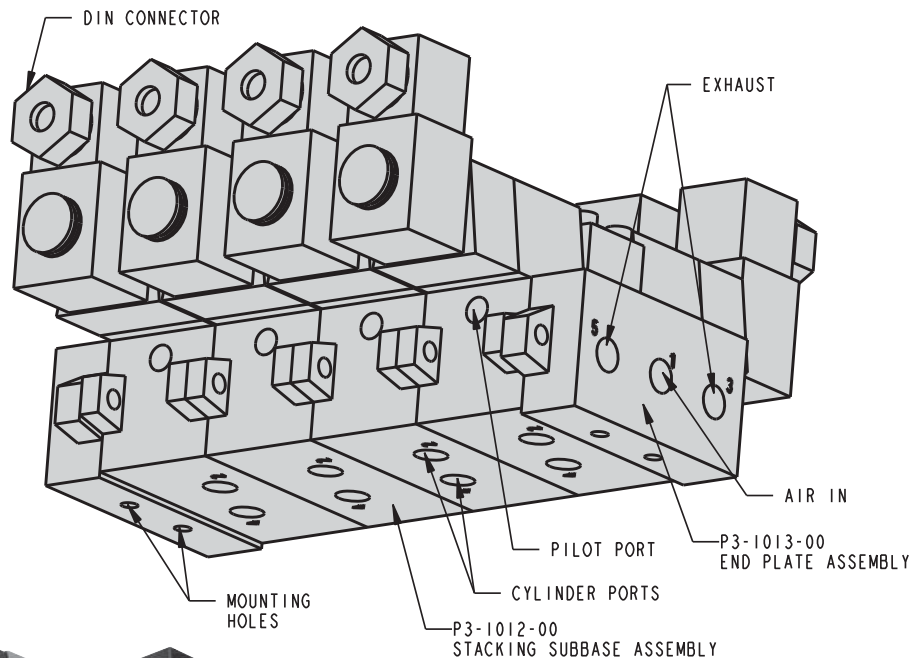
This photo and illustration shows a **MULTIPLE VALVE ISO 1 SYSTEM WITH SOLENOID VALVES**

Assembly Includes:

- Control Valve (page G-3)
- Stacking Sub-base (page G-5)
- Stacking End Plates (page G-5)

Configuration Options:

Use Manual Valves -OR- a combination of Manual and Solenoid Valves.



MAXIMUM 5 VALVES PER STACK



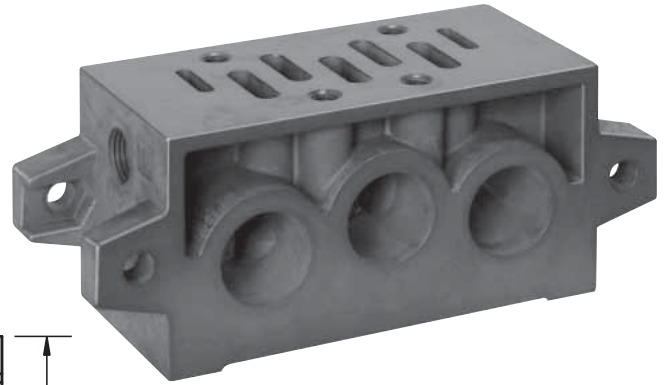
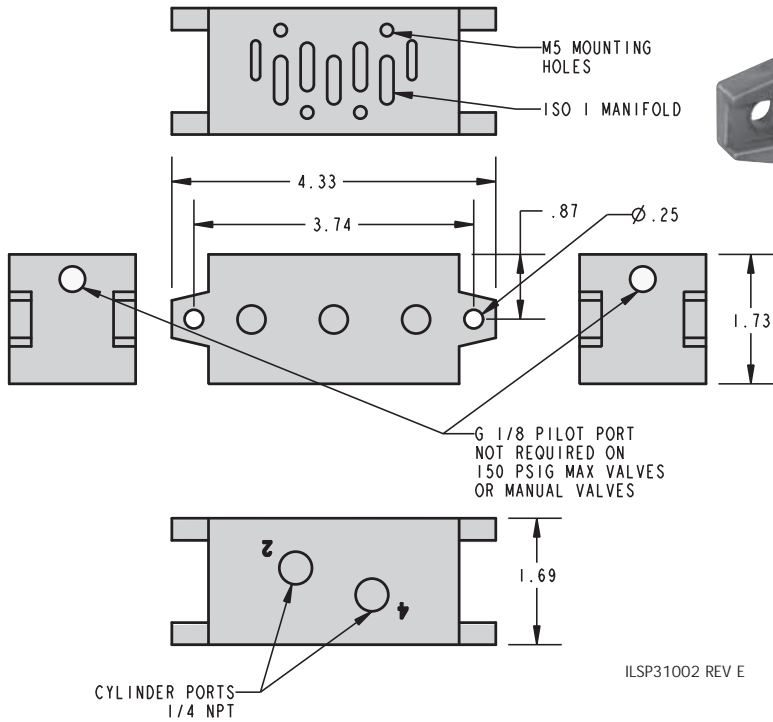
800-992-0236

© Vektex, Inc. June 2009

Valves

Sub-bases

Multiple Valve System Components



Stacking Sub-base ISO 1

Model Number and Specifications

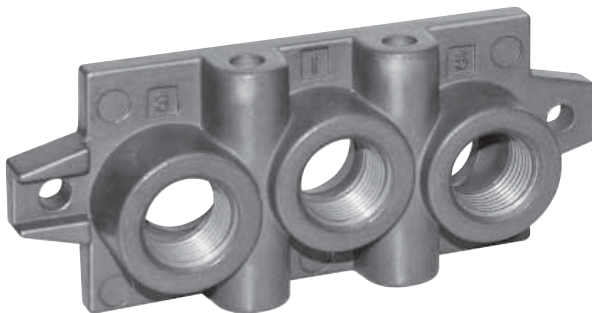
P3-1012-00

MAXIMUM NUMBER PER STACK IS 5

TWO P3-1013-00 END PLATES REQUIRED PER STACK
(SEE BELOW)

G-5

See composite drawing and photo on page G-4



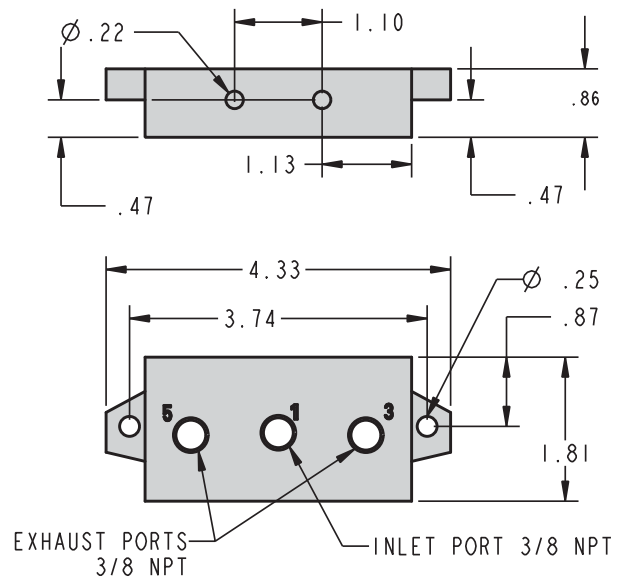
Stacking End Plate ISO 1

Model Number and Specifications

P3-1013-00

2 REQUIRED PER STACK

STACKING PLATE USED WITH P3-1012-00 STACKING SUB-BASE
(SHOWN ABOVE)



800-992-0236

© Vekttek, Inc June 2009