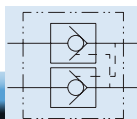


Accessory Valves



Check Valves

"A-B" Check Valve

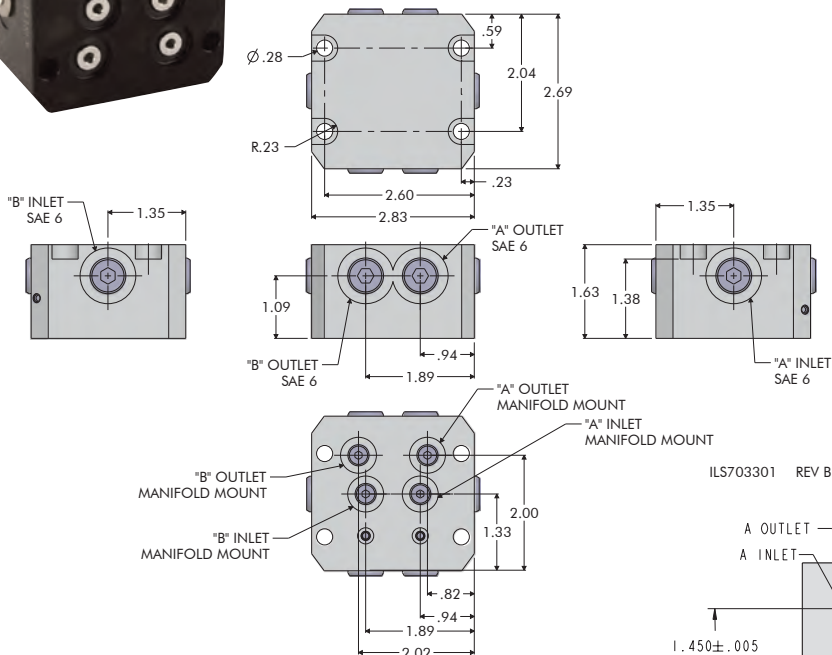
- Sealed pilot piston eliminates cross circuit leakage.
- 5:1 Ratio of Pilot to Check pressure for release.
- Filters on each port location.
- Manifold mounted.
- BHC™ body and stainless steel internal components for corrosion protection.

"A-B" Check Valve

Model No.

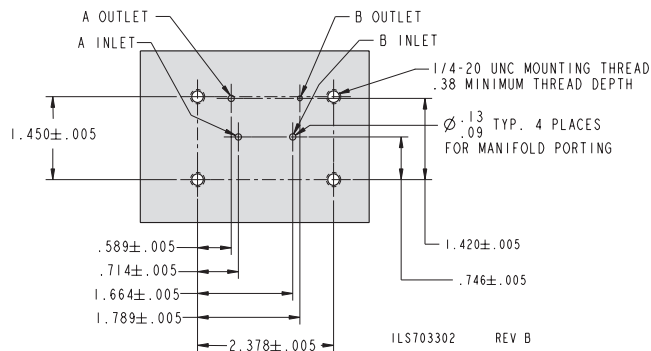
70-3311-12

For proper sealing, mating surface must be flat within 0.003 in. with a maximum 63 μ in. R_a surface finish.



PILOT CHECK VALVE "A-B" CIRCUIT MODEL NO. 70-3311-12

ILS703301 REV B



ILS703302 REV B

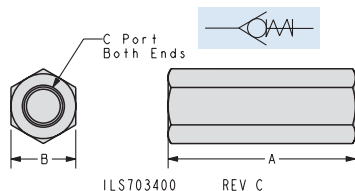
MOUNTING DIMENSIONS FOR A-B CHECK MODEL NUMBER 70-3311-12

NOTE: Pressure applied to the "A" inlet port flows to the "A" outlet port and unlocks check on the "B" side allowing pressure on "B" to return to tank. Pressure applied to "B" inlet flows to "B" outlet and unlocks check on "A" side allowing pressure on "A" to return to tank.

Field repair requires a special Check Valve Installation Tool. Please order Model No. 65-6000-00.

Check Valves

Permits flow in one direction only. Can not be adjusted for reverse flow.



In-Line Check Valve Dimensions

Model No.	A	B	C
70-3400-01	2.17	0.75	SAE 4
70-3400-06	2.60	1.00	SAE 6



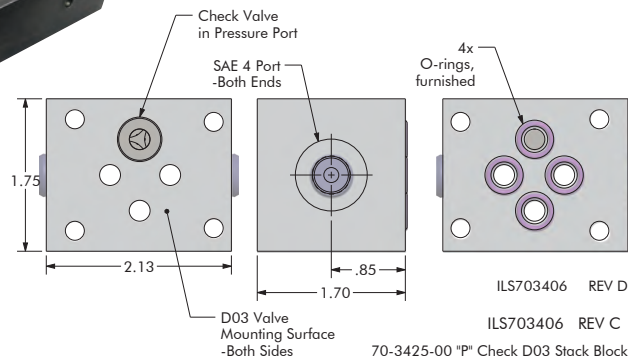
NOTE: Maximum system flow rate is 1.5 gpm (346.5 cu. in. per minute) for all VektorFlo® special function valves.

Excess flow voids warranty.

DO3 Stack "P" Check Valve

Model No.

70-3425-00



ILS703406 REV D

ILS703406 REV C

70-3425-00 "P" Check D03 Stack Block

M-6