



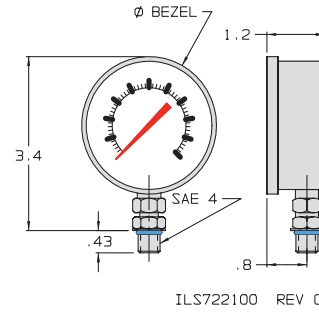
Accessory Valves

Hydraulic Gauges, Over Pressure Cartridges

Standard Pressure Gauges

- Liquid filled gauges with analog readouts.
- Available in 1,500 to 10,000 psi.
- Conform to ANSI standard B40.1 Grade B.
- SAE 4 male connection.
- Safety Glass Window.

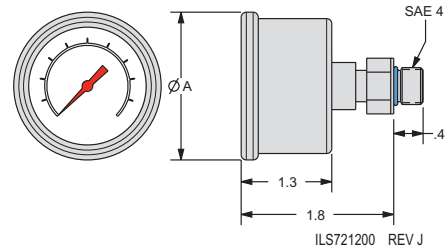
Model No.	Pressure Range	Bezel Diameter (in.)
72-2121-37	0 to 1,000 psi	2.7
72-2121-46	0 to 3,000 psi	2.7
72-2121-52	0 to 5,000 psi	2.7
72-2121-62	0 to 10,000 psi	2.7



Back Mount Pressure Gauges

- Liquid filled gauges with analog readouts.
- Available in 1,500, 5,000, 6,000 and 10,000 psi.
- Conform to ANSI standard B40.1 Grade B.
- SAE 4 male connection.
- Safety Glass Window.

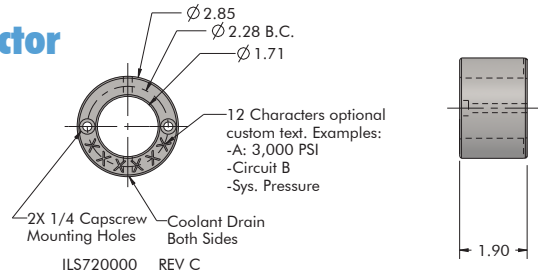
Model No.	Pressure Range	Bezel Diameter A (in.)
72-1221-39	0 to 1,500 psi	1.66
72-3221-55	0 to 6,000 psi	1.66
72-2121-55	0 to 5,000 psi	2.7
72-2121-65	0 to 10,000 psi	2.7



Gauge Protector

Model No.
72-0000-00

For use with gauges 72-1221-39 and 72-3221-55



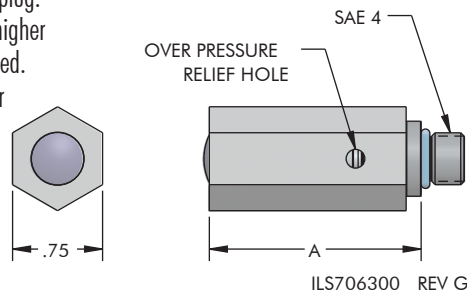
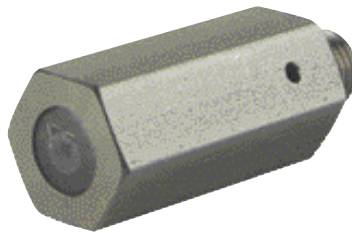
72-0000-00-C	Text required at order placement. (Limit 12 Characters)
Call to Order Special Engraving	Examples: Private Labeling or Logo on top. With 12 addl custom characters



To extend the life of Pressure Gauges, run your system at no more than 75% of the gauge scale.

NEW! Protect Your Low Pressure Devices running within a High Pressure System

- Valve cartridge will open to bleed off excess pressure in the event of over-pressurization.
- Screw in valve cartridge adds an extra element of assurance in systems where you must use a pressure sensitive device.
- SAE 4 male connection.
- Valve cartridge has a tamper proof plug.
- A set point of approximately 20% higher than system pressure is recommended.
- Leak-free operation before and after reseat condition.
- The only valve cartridge designed to bleed off excess pressure and re-seat at approximately 80% of set point.



Model No	Set Point	A (in.)
70-6336-71-03	300	
70-6336-71-04	400	
70-6336-71-05	500	
70-6336-71-06	600	
70-6336-71-07	700	
70-6336-71-08	800	
70-6336-71-09	900	
70-6336-71-10	1,000	
70-6336-71-11	1,100	1.77
70-6336-71-12	1,200	
70-6336-71-13	1,300	
70-6336-71-14	1,400	
70-6336-71-15	1,500	
70-6336-72-18	1,750	
70-6336-72-20	2,000	
70-6336-72-23	2,250	
70-6336-72-25	2,500	
70-6336-70-45	4,500	
70-6336-70-50	5,000	1.64
70-6336-70-55	5,500	
70-6336-70-60	6,000	