

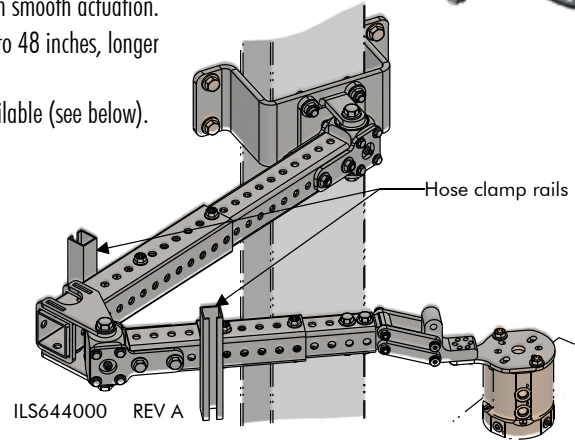
# Miscellaneous Plumbing

## Rotary Union Arm

### Rotary Union Arm

#### An anti-rotation device for Vektek Rotating Unions

- Reduce cost and hassle of live hydraulic integration of Vektek pumps or continuously connected PO Check industrial pumps.
- Use on single or dual pallet machines where pallet travels parallel to spindle axis.
- Telescoping members promote flexibility during installation.
- Two hose clamp mounting rails included. All clamps and additional rails can be ordered per your requirements (see below).
- Rotary union interface eliminates premature rotary union failure by preventing the weight of the arm from applying damaging side loads to the rotary union.
- Rotary Union Arm designed to attach to all Vektek Hydraulic Rotary Unions. Easily customize interface plate to attach most rotary unions.
- Each joint contains tapered roller bearings for excellent load holding with smooth actuation.
- Standard Z-axis travel up to 48 inches, longer travels available.
- Optional hose clamps available (see below).

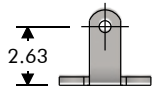
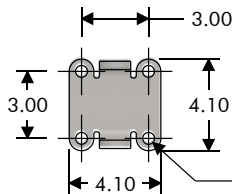
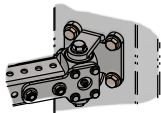


ILS644000 REV A

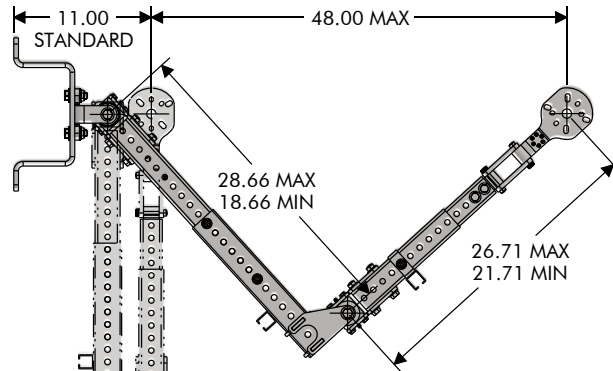
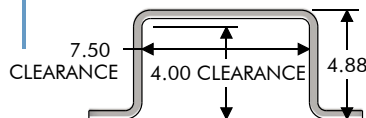
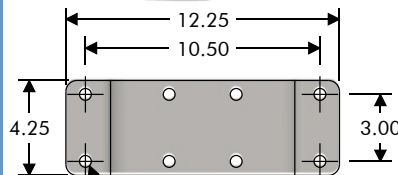
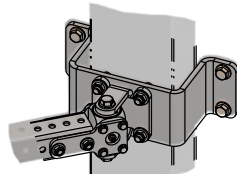
Model No.	Z-Axis Travel	Includes
64-4050-00	Up to 48 Inches	Arm and hose clamp rail

#### DIMENSIONS FOR YOUR MOUNTING CHOICE

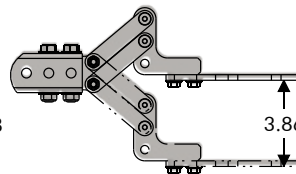
##### Base Bracket



##### Extension Bracket



#### Allowable Vertical Movement



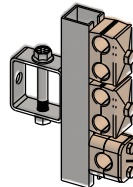
The Rotary Union Arm is designed to allow for vertical movement of the rotary union/tombstone while machining and during pallet change. Additional configurations are possible see IS3206.

#### Hose Management

	Model No.	ID	Hose OD	W
	35-2003-01	.39	.36 - .43	.42
	35-2004-01	.50	.47 - .54	2.09
	35-2005-01	.55	.52 - .59	
	35-2006-02	.68	.65 - .72	1.65
	35-2003-03	.39	.36 - .43	
	35-2004-03	.50	.47 - .54	
	35-2005-03	.55	.52 - .59	
	35-2006-05	.68	.65 - .72	

Other clamp sizes available. Contact factory.

#### Additional Rail for Hose Clamp



Model No.	Includes
93-2000-03	Rail and Mounting Hardware

Industry standard T-Slot rail nut mounting.

Hose Clamps not included with Rail (order at left)

